



6 Vincent Street, Lancaster  
Lancaster

£175,000







## 6 Vincent Street

Lancaster, Lancaster

Charming 2-bed mid-terraced with NO CHAIN. Elegant, spacious bedrooms, modern kitchen, stylish bathroom. Open plan living and dining. South-facing garden. Great amenities and transport links. Council Tax band: A

Tenure: Freehold

- Terraced House
- 2 Double Bedrooms
- South Facing Courtyard Garden
- Stylish Modern Kitchen
- Elegant Four Piece Bathroom
- Open Plan Living & Dining Space
- No Chain
- Loft used for Office Space
- Sought After Primrose Area
- Transport & Travel Links









### Welcome Home

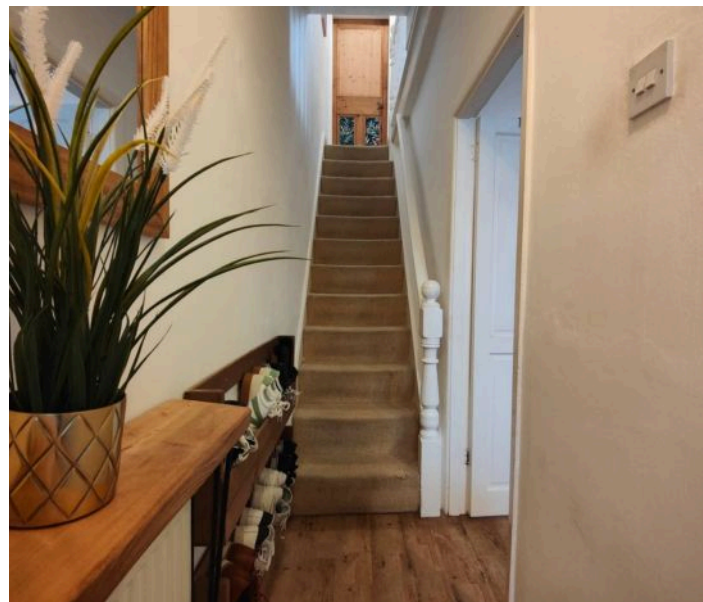
Step inside and feel straight at home in this perfectly presented home. The front door opens to a vestibule and an original panelled door opens to the hallway. Modern décor perfectly marries with original woodwork and detail creating the perfect combination. Buyers will be impressed by high spec oak effect flooring which extends throughout the ground floor creating a seamless feel and blending with the tones of the original wood. The living space is open plan and modern yet retains character with a wood burning stove to the relaxing front lounge and an impressive fireplace with exposed stone lintel and supports to the dining area. Built in storage with cupboards below the stairs means you can keep the leaving space tidy and well organised.

### Kitchen

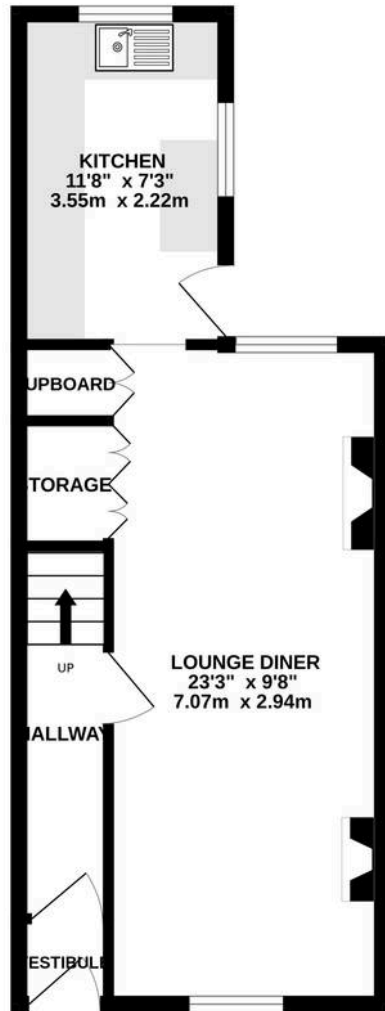
The kitchen has white, shaker style cabinets. Solid wood counter tops are complemented by the oak effect flooring and modern, green splash backs along with a Belfast Style sink are the perfect finish. The back door opens to a south facing courtyard garden.

### Upstairs

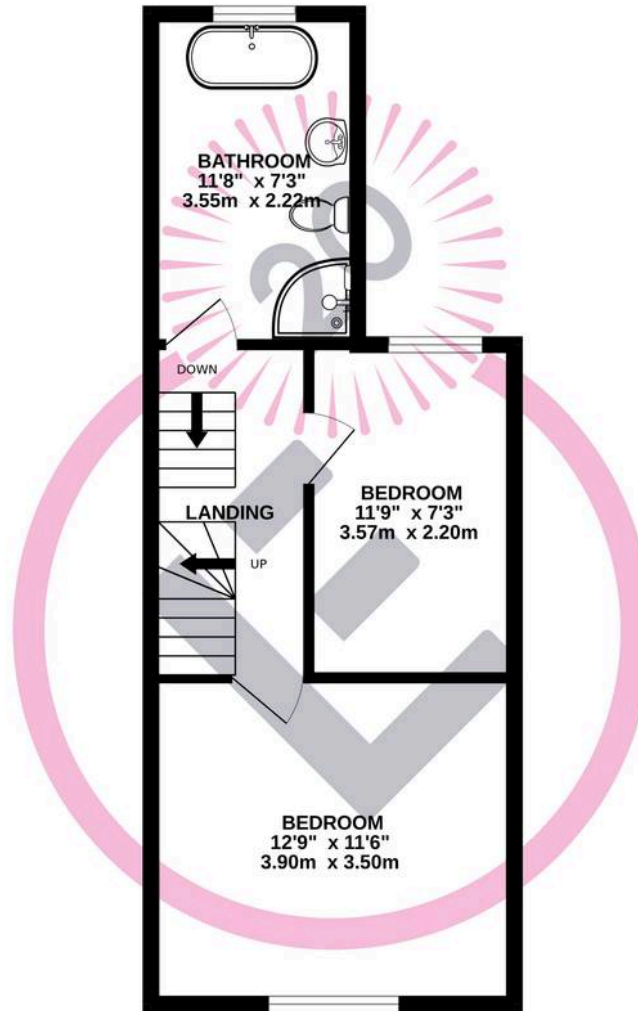
On the first floor solid wood original doors are beautifully restored and finished. There are two double bedrooms and a the bathroom is elegant and stylish housing a four piece bathroom suite which incorporates a corner shower enclosure, a free standing, roll top, claw footed bath and wash basin. There is a tall, chrome, centrally heated towel rail. From the landing stairs lead up to the loft which is used by the current owners as a home office and occasional spare bedroom. A Velux window makes this a bright, functional and versatile additional space.



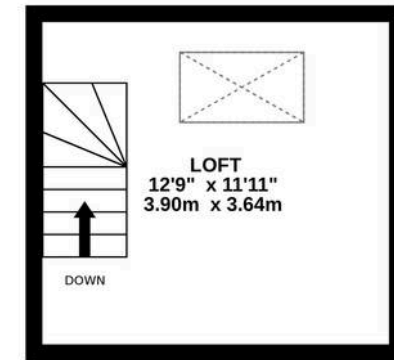
GROUND FLOOR  
374 sq.ft. (34.7 sq.m.) approx.



1ST FLOOR  
381 sq.ft. (35.4 sq.m.) approx.



2ND FLOOR  
153 sq.ft. (14.2 sq.m.) approx.



TOTAL FLOOR AREA : 907 sq.ft. (84.3 sq.m.) approx.

Whilst every attempt has been made to ensure the accuracy of the floorplan contained here, measurements of doors, windows, rooms and any other items are approximate and no responsibility is taken for any error, omission or mis-statement. This plan is for illustrative purposes only and should be used as such by any prospective purchaser. The services, systems and appliances shown have not been tested and no guarantee as to their operability or efficiency can be given.

Made with Metropix ©2025





## Lancastrian Estates

301/302, Riverway House, Morecambe Road - LA1 2RX

01524 555800 · [lancaster@lancastrianestates.co.uk](mailto:lancaster@lancastrianestates.co.uk) · [www.lancastrianestates.co.uk/](http://www.lancastrianestates.co.uk/)