



25 The Spinney, Heysham
Morecambe

£440,000





25 The Spinney

Heysham, Morecambe

A luxurious 5/6-bedroom house with en-suite master bedroom, sleek kitchen, spacious lounge diner, and landscaped garden with pergola and garden room. Situated in a sought after Heysham cul-de-sac! Council Tax band: D

Tenure: Freehold

- Impressive Detached House
- 5/6 Bedrooms
- En-Suite Master & Downstairs Cloakroom
- Generous Lounge Diner
- Extended Family Room w/ French Doors
- Landscaped Garden w/ Pergola
- Garden Room w/ Bi-Fold Doors
- Sought After Cul-de-Sac
- Great Local Amenities
- Transport & Travel Links





Welcome Home

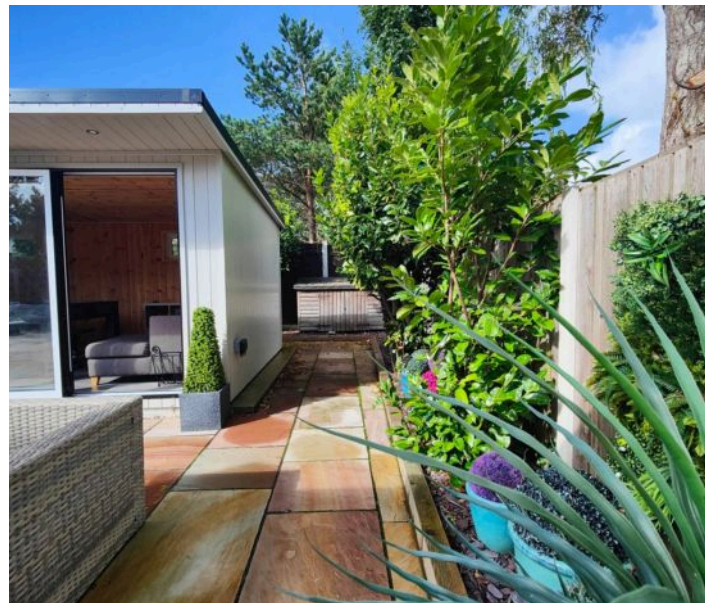
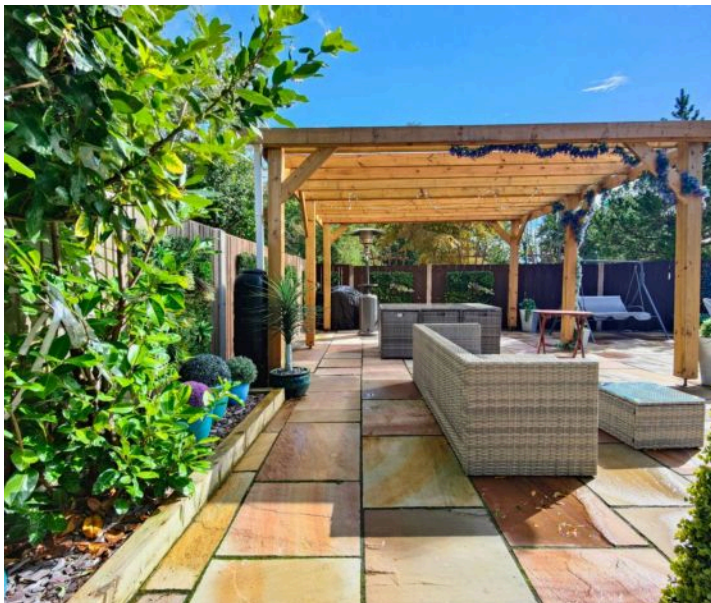
This impressive detached house really makes the most of it's private, cul de sac position and will impress buyers with both it's size and finish. The house has been extended and re-modelled creating spacious living with a high spec finish and offering space and versatility for the whole family. The front door opens to a welcoming hallway. Wood effect flooring and neutral, modern décor create a bright welcome. There is a ground floor cloakroom/ WC for convenience and opposite this a potential sixth double bedroom or perhaps home office dependent on need. Matching white, panelled doors open to the living spaces.

Modern Living

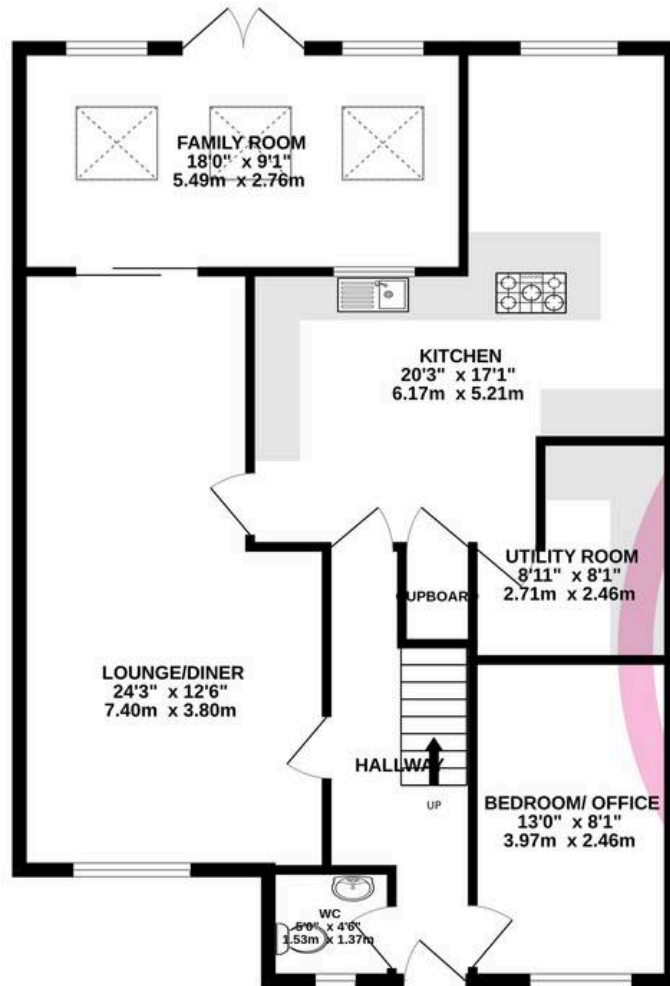
The lounge diner provides space for formal dining or quiet relaxation and family movie nights. The front window looks out over the front garden and driveway whilst to the rear sliding patio doors open to the extended Family Room at the rear where overhead Velux windows, French Doors and picture windows make for light, relaxed living.

Kitchen & Open Plan Living

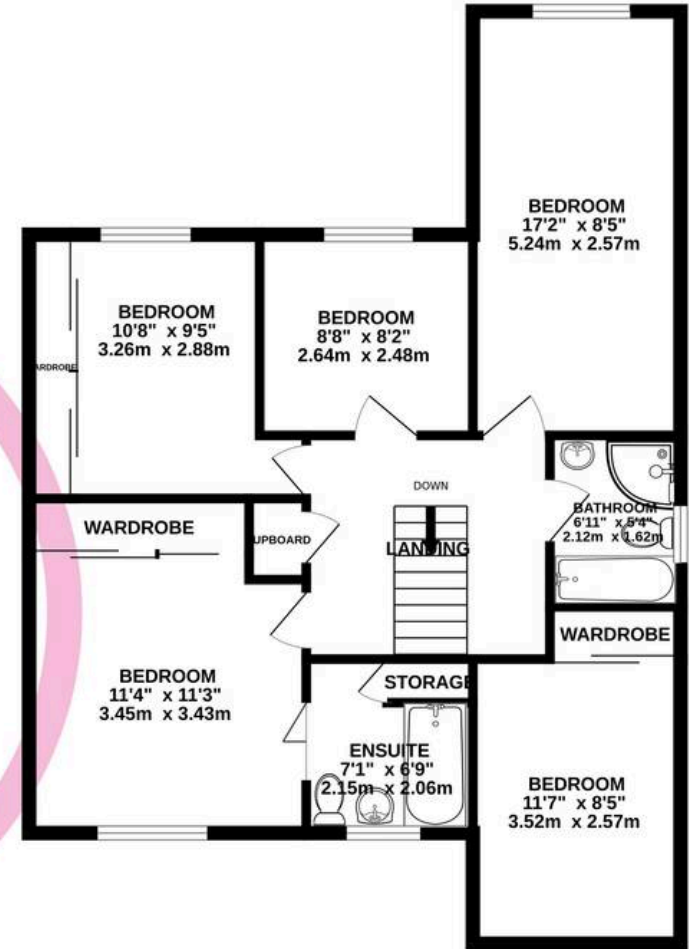
The dining area connects through to a sleek integrated kitchen which is well equipped for entertaining and catering for a large family. It combines function with stylish finishes. White cabinets conceal integrated appliances and white floor tiling and décor create a bright, modern finish. There is space for a dining table here too and with a breakfast bar connecting to the Family living space at the rear there are plenty of options for relaxed dining or a cosy catch up. The five ring gas hob has an extractor hood above and is a central focal point for the kitchen. Wooden work tops create warm, visual appeal and recessed spotlights to the ceiling enhance the overall modern family feel. The extended Family space combines two seating areas separated by double doors creating the perfect flow to this generous family living space. A generous matching utility room keeps the kitchen clear and clutter free.



GROUND FLOOR
1120 sq.ft. (104.1 sq.m.) approx.



1ST FLOOR
756 sq.ft. (70.3 sq.m.) approx.



TOTAL FLOOR AREA : 1877 sq.ft. (174.4 sq.m.) approx.

Whilst every attempt has been made to ensure the accuracy of the floorplan contained here, measurements of doors, windows, rooms and any other items are approximate and no responsibility is taken for any error, omission or mis-statement. This plan is for illustrative purposes only and should be used as such by any prospective purchaser. The services, systems and appliances shown have not been tested and no guarantee as to their operability or efficiency can be given.
Made with Metropix ©2025



Lancastrian Estates

301/302, Riverway House, Morecambe Road - LA1 2RX

01524 555800 · lancaster@lancastrianestates.co.uk · www.lancastrianestates.co.uk/