



15 Leighton Court, Morecambe
Morecambe

£150,000





15 Leighton Court

Morecambe, Morecambe

Elegant end terraced family home with spacious kitchen diner, 3 bedrooms and no onward chain. Gardens on front, side & rear, gated driveway & easy access to amenities, shops, schools & transport links - a convenient lifestyle awaits!

Council Tax band: A

Tenure: Freehold

- End Terraced Family Home
- 3 Bedrooms
- No Onward Chain
- Kitchen Diner
- Gardens, Front, Side & Rear
- Gated Driveway Parking
- Courtyard Development
- Great Local Amenities
- Walk to Shops, School & Prom
- Transport & Travel Links



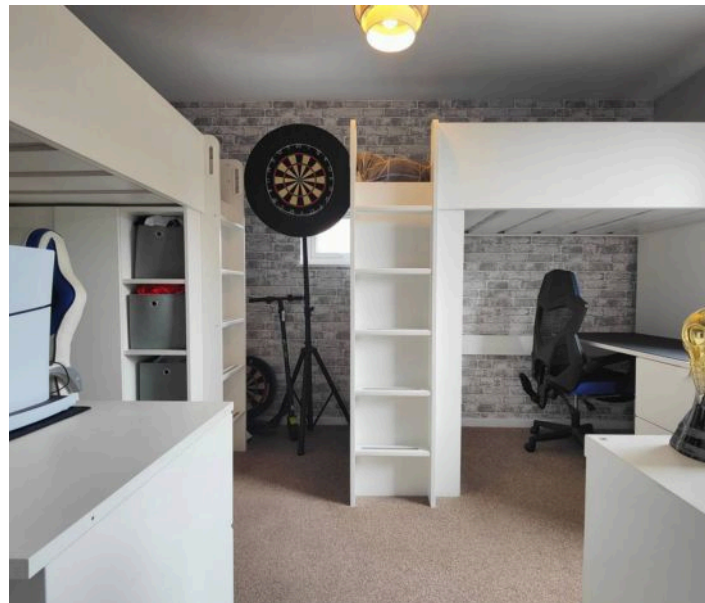


Welcome Home

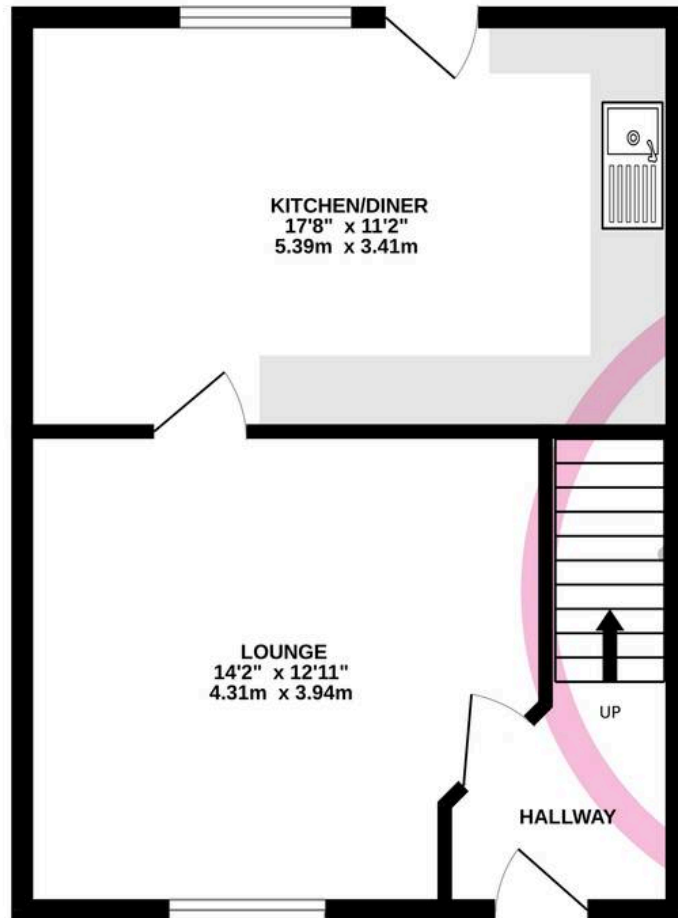
This generous end terraced, courtyard home offers space inside and out. With a pleasant outlook to the front and rear and great local amenities it is a house you won't grow out of. Buyers will be especially impressed by the generous size of the open plan kitchen diner. Built in 1985 and offered for sale with no onward chain this house offers everything on your tick list! The front door opens to a light hallway with space to hang up coats and keep all the family bags and belongings ready. Stairs lead up to the first floor and a door opens to the front lounge. Neutrally decorated and with a pleasing dual aspect the lounge offers plenty of space to relax. A door connects to the large kitchen diner which looks out over the rear garden. There is space for appliances and the modern gas boiler is wall mounted. Beech effect cabinets are complemented by wood effect flooring and black subway style tiled splashbacks.

Upstairs

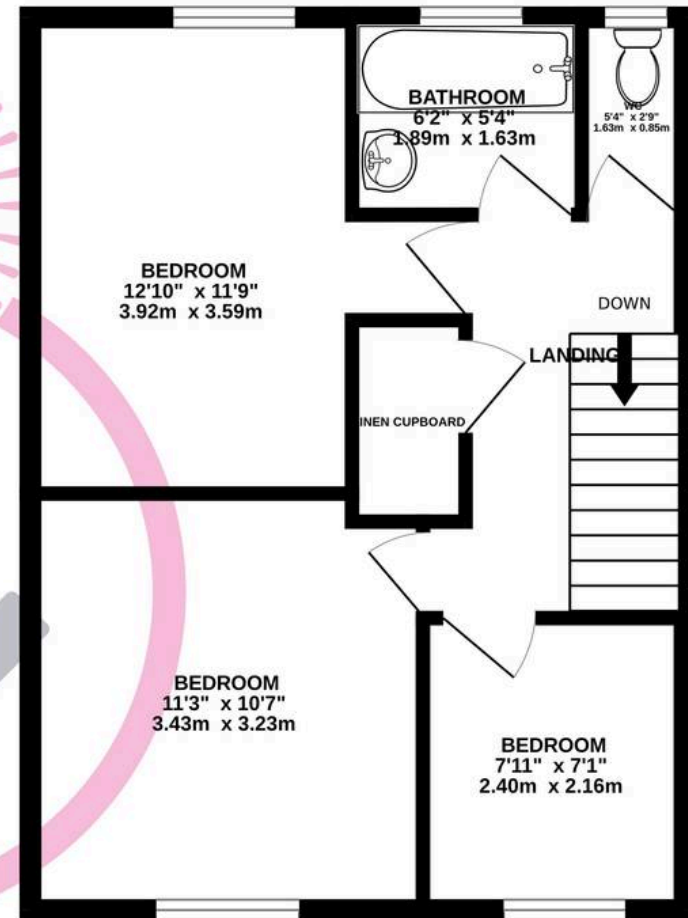
Three bedrooms mean space for all the family and the bathroom has a convenient Mira Jump over bath shower. The WC is separate to the bathroom - perfect for busy families. The linen cupboard is large and shelved offered organised storage space.



GROUND FLOOR
426 sq.ft. (39.6 sq.m.) approx.



1ST FLOOR
426 sq.ft. (39.6 sq.m.) approx.



TOTAL FLOOR AREA : 853 sq.ft. (79.2 sq.m.) approx.

Whilst every attempt has been made to ensure the accuracy of the floorplan contained here, measurements of doors, windows, rooms and any other items are approximate and no responsibility is taken for any error, omission or mis-statement. This plan is for illustrative purposes only and should be used as such by any prospective purchaser. The services, systems and appliances shown have not been tested and no guarantee as to their operability or efficiency can be given.
Made with Metropix ©2025



Lancastrian Estates

301/302, Riverway House, Morecambe Road - LA1 2RX

01524 555800 · lancaster@lancastrianestates.co.uk · www.lancastrianestates.co.uk/