



27 Maplewood Gardens, Lancaster  
Lancaster

£375,000









## 27 Maplewood Gardens

Lancaster, Lancaster

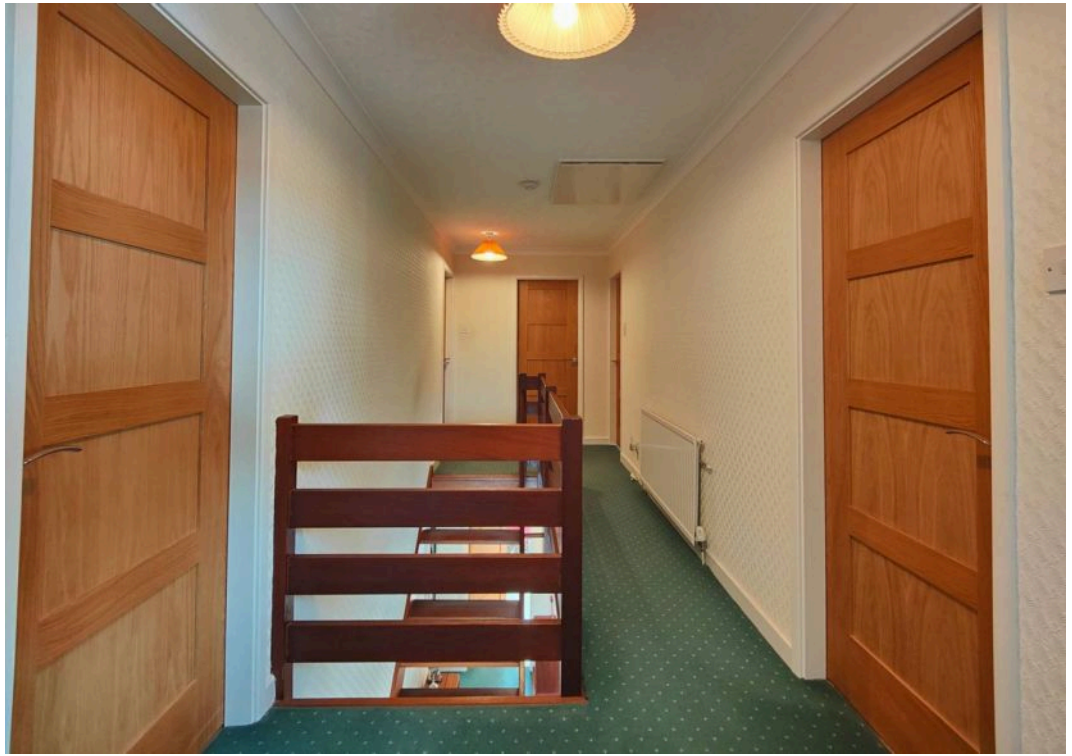
OPEN TO OFFERS! Spacious 4-bed semi-detached house with contemporary design, open-plan kitchen, south-facing garden, garage, double driveway, modern bathroom, and cloakroom.

Council Tax band: D

Tenure: Freehold

- Semi Detached
- 4 Double Bedrooms
- Sought After Area
- South Facing Garden
- Open Plan w/ Sliding Doors to Garden
- Light, Bright Kitchen
- Integral Garage & Double Driveway
- Modern Bathroom & G/F Cloakroom
- Great Local Amenities
- Transport & Travel Links









### Welcome Home

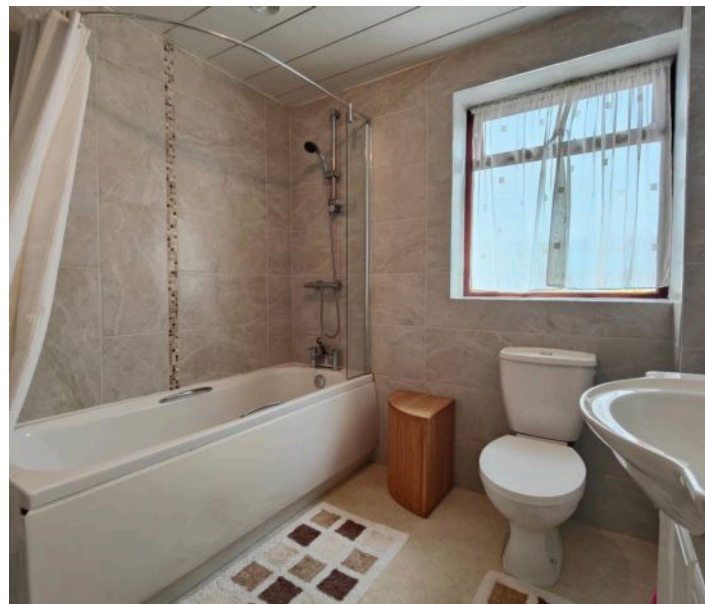
Step inside and prepare to be impressed. This really is a house you won't grow out of and that offers you and your family the space and scope to grow and adapt to life's changes. The front door opens to a light, wide hallway. Full length side lights to either side of the front door and a gallery style landing above create a bright welcome. Stairs lead up to the first floor landing, and recently updated, matching solid wood doors open to living spaces. There is also access to the integral garage and to a modern cloakroom/ WC.

### Open Plan Living

The living space is light and spacious being open plan. The relaxing front lounge space has a large picture window overlooking the double driveway and there is a focal gas fire which is inset. From the dining area sliding, patio doors open to the garden creating that perfect sense of outdoor indoor living. The living space has a beautiful flow, perfect for entertaining and for busy families. The dining space connects through to the kitchen which is attractive, modern and functional. Cream cabinets are complemented by dark grey work tops and white and grey splash back tiling. There is plumbing and space in the garage for a utility area and the gas combination boiler is wall mounted here.

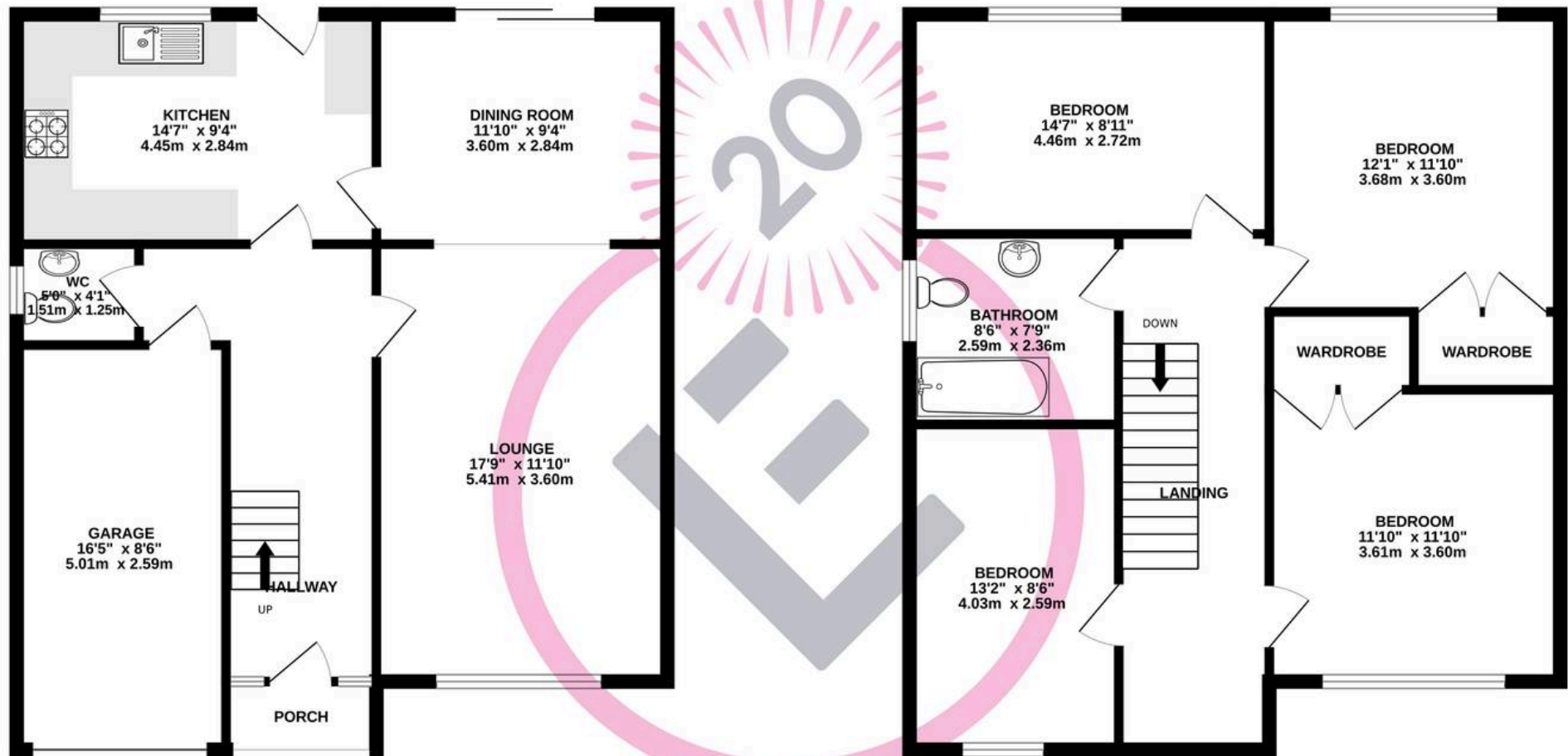
### Upstairs

On the first floor the C shaped gallery style landing has matching, modern wooden panelled doors opening to all rooms. Buyers will be impressed to find four large bedrooms - each of which will accommodate a double bed. Bedrooms One and Two also have built in wardrobes and the family bathroom is large, modern and well appointed with bespoke storage and an over bath shower.



GROUND FLOOR  
756 sq.ft. (70.3 sq.m.) approx.

1ST FLOOR  
756 sq.ft. (70.3 sq.m.) approx.



TOTAL FLOOR AREA : 1513 sq.ft. (140.5 sq.m.) approx.

Whilst every attempt has been made to ensure the accuracy of the floorplan contained here, measurements of doors, windows, rooms and any other items are approximate and no responsibility is taken for any error, omission or mis-statement. This plan is for illustrative purposes only and should be used as such by any prospective purchaser. The services, systems and appliances shown have not been tested and no guarantee as to their operability or efficiency can be given.  
Made with Metropix ©2025





## Lancastrian Estates

301/302, Riverway House, Morecambe Road - LA1 2RX

01524 555800 · [lancaster@lancastrianestates.co.uk](mailto:lancaster@lancastrianestates.co.uk) · [www.lancastrianestates.co.uk/](http://www.lancastrianestates.co.uk/)