



27 Hazelmount Drive, Warton

Carnforth

£300,000





27 Hazelmount Drive

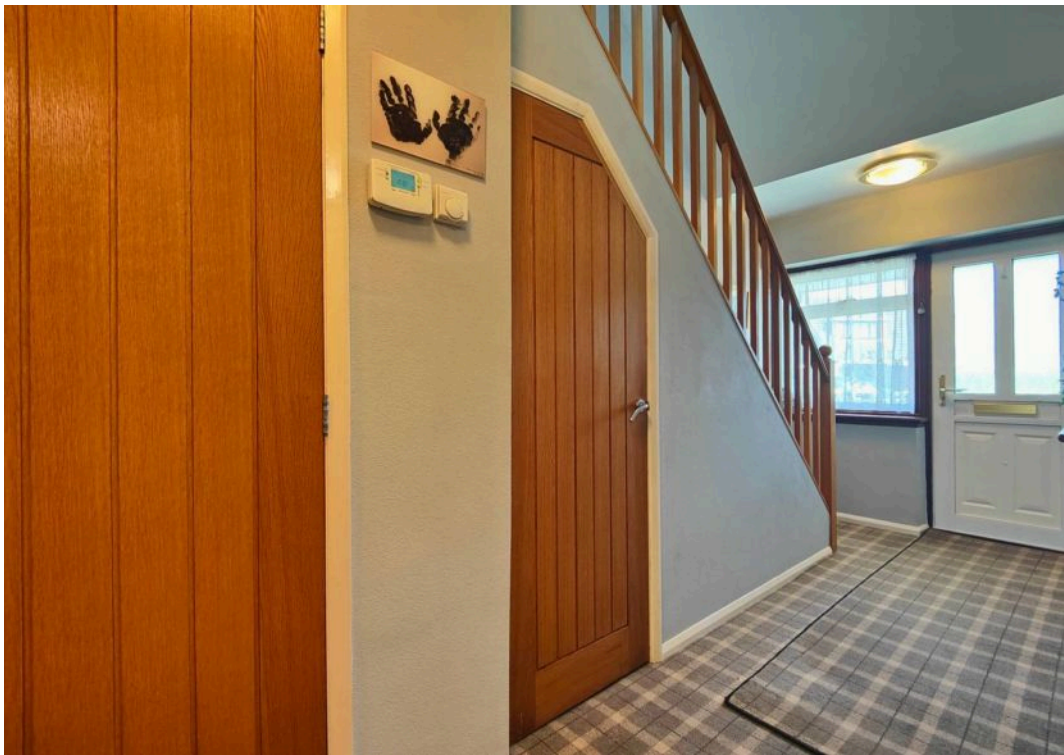
Warton, Carnforth

Exquisite 2-bed detached chalet with spacious layout, natural light, open plan living, integrated kitchen, large bathroom, driveway, garage, peaceful garden. Ideal location for amenities and transport links. Schedule a viewing today!

Council Tax band: D

Tenure: Freehold

- Detached Chalet Bungalow
- 2 Double Bedrooms
- Open Plan Living w/ French Doors
- Peaceful, Private Views
- Integrated Kitchen & Separate Utility
- Large 4 Piece Bathroom
- Driveway & Integral Garage
- Beautiful Garden
- Great Local Amenities
- Transport & Travel Links





Step Inside

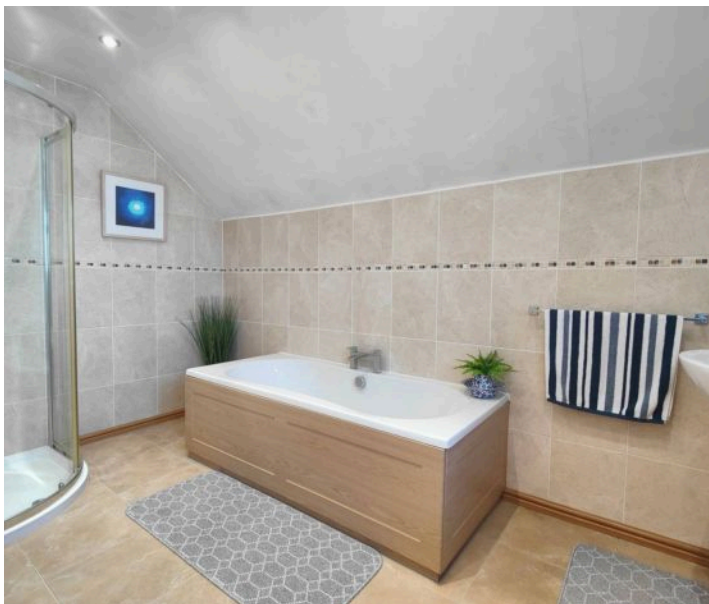
Step inside this immaculate home and you will be impressed by the what's on offer. Sit down at the dining table and drink in the perfect peaceful view and you won't want to leave. The hallway is bright and welcoming with a window to the front and stairs leading up to the first floor. Below the stairs is a storage cupboard and to the side of that a modern WC room with automatic lighting. The front lounge offers a generous and relaxing reception room with a window looking over the front garden. The open plan living space at the rear accommodates the full width of the property and looks out over the garden. French Doors open to the flagged seating area - ideal for entertaining. The dining table sits beside a low, picture window affording picture perfect views over the garden and back drop. There is open access to the kitchen.

Kitchen & Utility

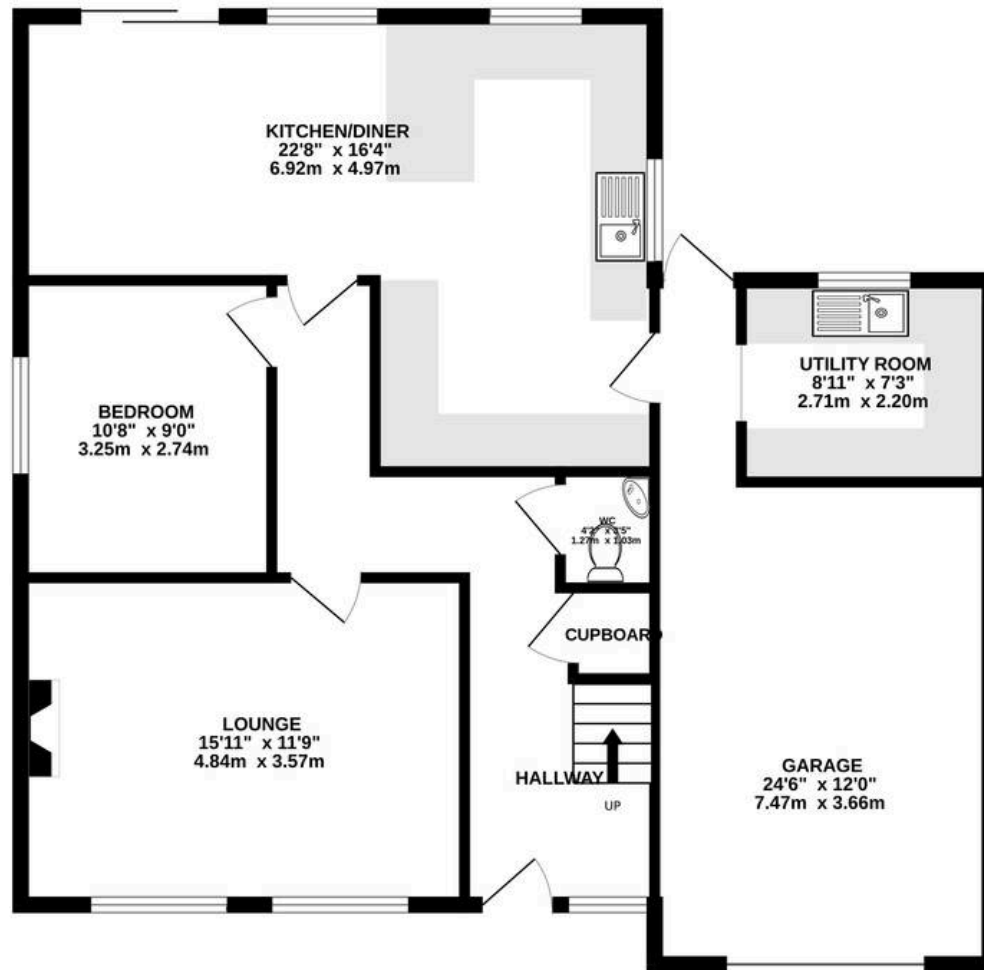
The integrated kitchen has a dishwasher, freezer, fridge, double oven, hob and extractor hood. Beech effect cabinets are complemented by dark, granite effect counter tops. A breakfast bar connects kitchen and dining space and the light, contemporary flooring completes the look. Throughout the house matching oak effect doors create a modern, polished feel. The back door opens to the utility and garage spaces. The utility room is bright and welcoming with white cabinets, matching splash backs and flooring. The wood effect counter top offers a sleek, modern finish. From here there is open plan connection to the garage and a door to the rear garden.

Bedrooms & Bathroom

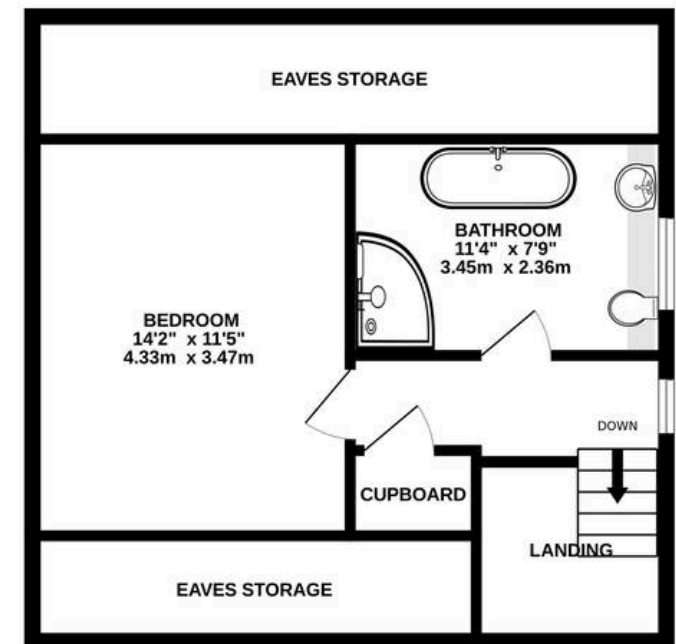
Having a double bedroom on the ground floor and first floor makes this a really versatile home. Upstairs you will find a large master bedroom with eaves storage to either side. The bathroom is four piece and incredibly generous with a large corner shower enclosure, bath, wash basin and WC. Light stone effect floor and wall tiling completes the look.



GROUND FLOOR
1013 sq.ft. (94.1 sq.m.) approx.



1ST FLOOR
506 sq.ft. (47.0 sq.m.) approx.



TOTAL FLOOR AREA : 1519 sq.ft. (141.1 sq.m.) approx.

Whilst every attempt has been made to ensure the accuracy of the floorplan contained here, measurements of doors, windows, rooms and any other items are approximate and no responsibility is taken for any error, omission or mis-statement. This plan is for illustrative purposes only and should be used as such by any prospective purchaser. The services, systems and appliances shown have not been tested and no guarantee as to their operability or efficiency can be given.

Made with Metropix ©2025



Lancastrian Estates

301/302, Riverway House, Morecambe Road - LA1 2RX

01524 555800 · lancaster@lancastrianestates.co.uk · www.lancastrianestates.co.uk/