



55 Gringley Road, Morecambe
Morecambe

£220,000





55 Gringley Road

Morecambe, Morecambe

Charming 3-bed dormer bungalow with light and open-plan layout. Spacious lounge diner, low maintenance garden with garage and gated parking. Perfect for modern living with indoor comfort and outdoor tranquillity.

Council Tax band: B

Tenure: Freehold

- Semi Detached Dormer Bungalow
- 3 Bedrooms
- No Chain
- Lounge Diner
- Low Maintenance Garden
- Garage
- Gated Driveway Parking
- Light, Open Plan Modern Feel
- Popular Residential Area
- Transport & Travel Links



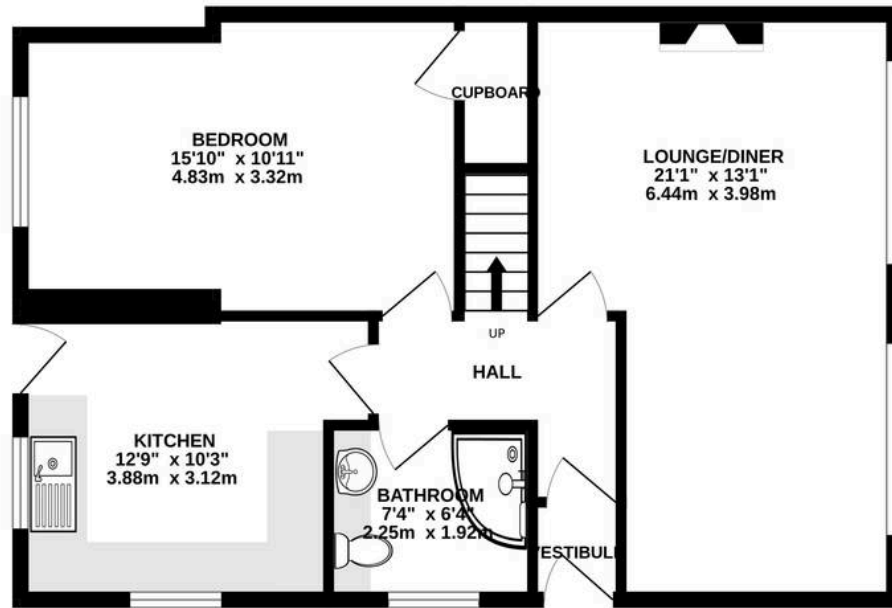


Welcome Home

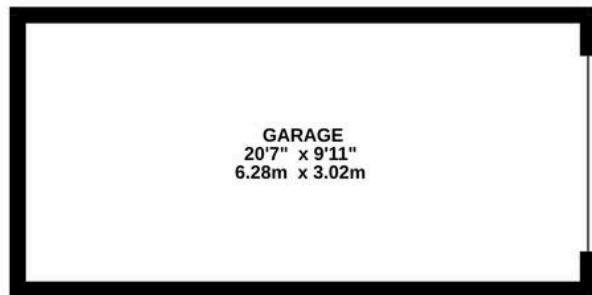
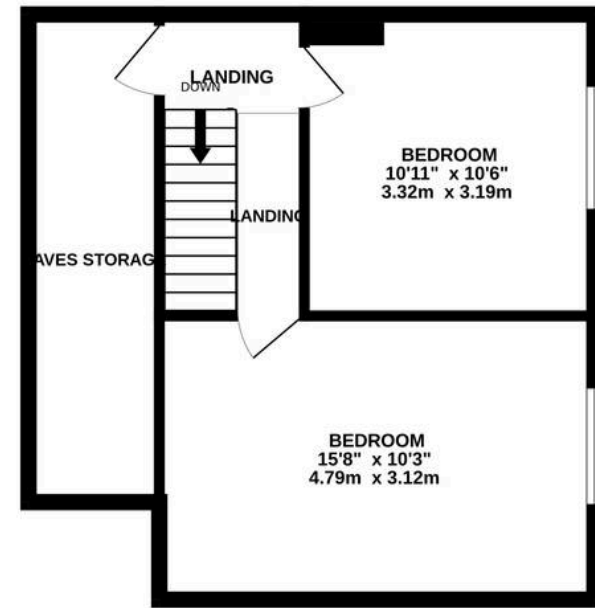
Welcome to Gringley Road! The double glazed front door opens to the hallway which has light décor and wood effect laminate flooring which extends through the ground floor living spaces. The lounge diner is light and airy with two large picture windows to the front. The kitchen is generous and well fitted and the bathroom houses a modern three piece shower suite. The property benefits from having three generous bedrooms and with two being upstairs and one downstairs it has great versatility.



GROUND FLOOR
857 sq.ft. (79.6 sq.m.) approx.



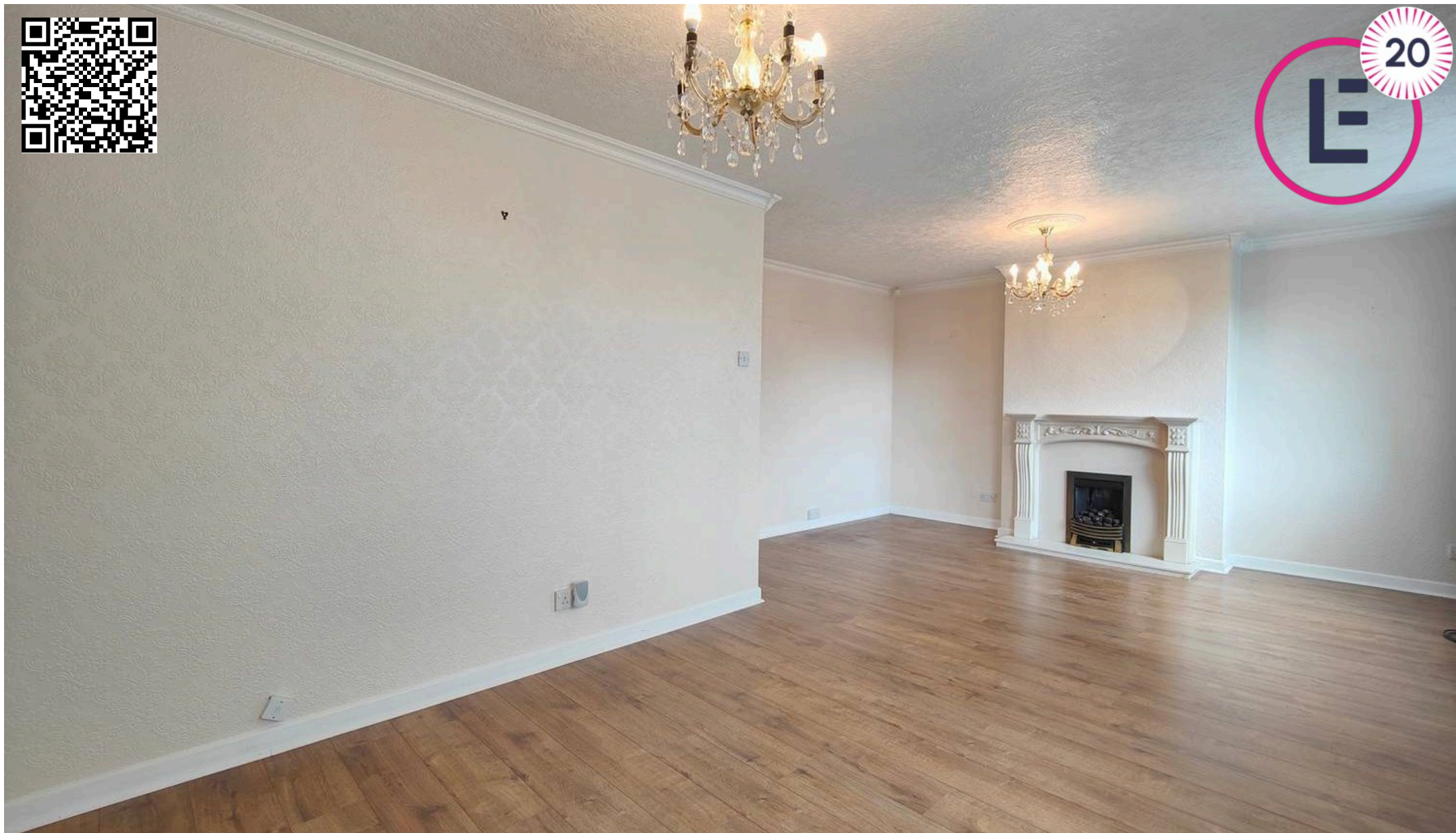
1ST FLOOR
412 sq.ft. (38.3 sq.m.) approx.



TOTAL FLOOR AREA : 1270 sq.ft. (118.0 sq.m.) approx.

Whilst every attempt has been made to ensure the accuracy of the floorplan contained here, measurements of doors, windows, rooms and any other items are approximate and no responsibility is taken for any error, omission or mis-statement. This plan is for illustrative purposes only and should be used as such by any prospective purchaser. The services, systems and appliances shown have not been tested and no guarantee as to their operability or efficiency can be given.

Made with Metropix ©2025



Lancastrian Estates

301/302, Riverway House, Morecambe Road - LA1 2RX

01524 555800 · lancaster@lancastrianestates.co.uk · www.lancastrianestates.co.uk/