



8 Ashton Drive, Lancaster
Lancaster

£205,000





8 Ashton Drive

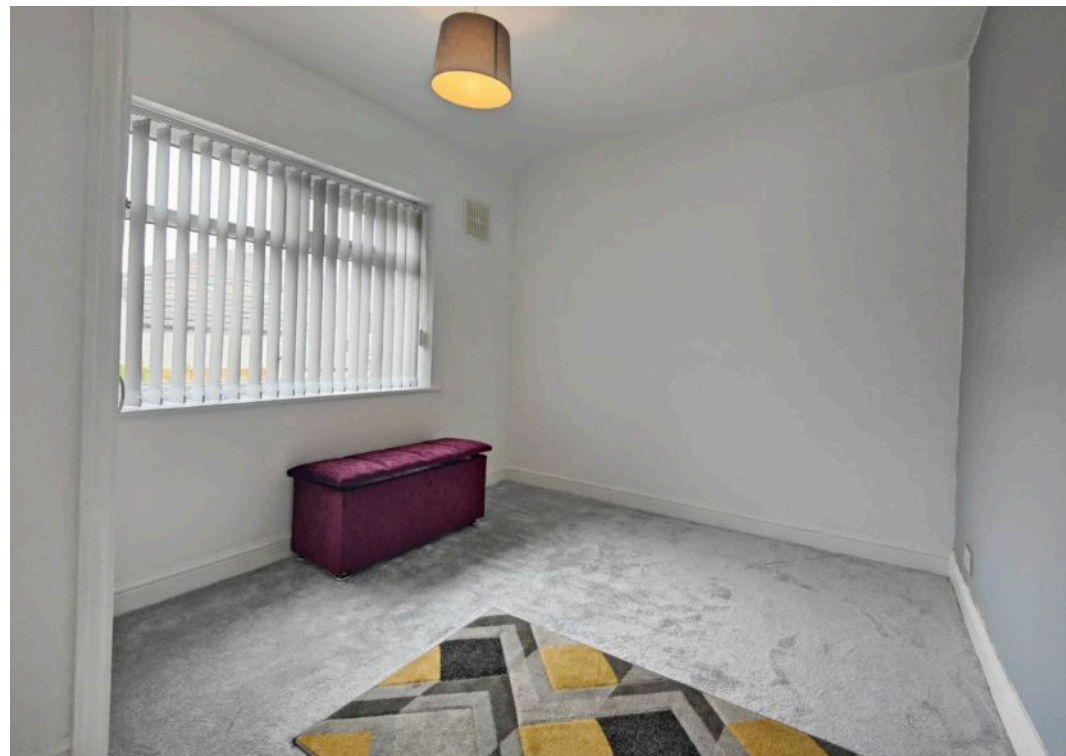
Lancaster, Lancaster

Immaculate 3-bed semi-detached house with modern elegance & charm. Open-plan living, sleek kitchen, landscaped garden. Close to amenities & transport links. Luxury living awaits!

Council Tax band: B

Tenure: Freehold

- Semi Detached House
- 3 Bedrooms
- Recently Refurbished
- Modern Kitchen & Bathroom
- French Doors to Rear
- Landscaped & Tiered Rear Garden
- Open Plan Living
- Immaculate, Modern Feel Throughout
- Great Local Amenities
- Great Transport Links





Welcome Home

The front door opens to a welcoming hallway, stairs lead up to the first floor and a white panelled door opens to the living space. Being open plan with French Doors at the rear and a half bay window to the front the living space is light and airy. Fresh modern décor creates the perfect peaceful space in which to unwind and catch up. The kitchen to the side has white, shaker style cabinet doors complemented by a granite effect work top. Dual aspect windows again accentuate the light feel of the home. Integrated appliances include an eye level oven and gas hob with extractor hood above. Grey stone splashback tiling and feature flooring complete the look. There is an under stair storage cupboard.

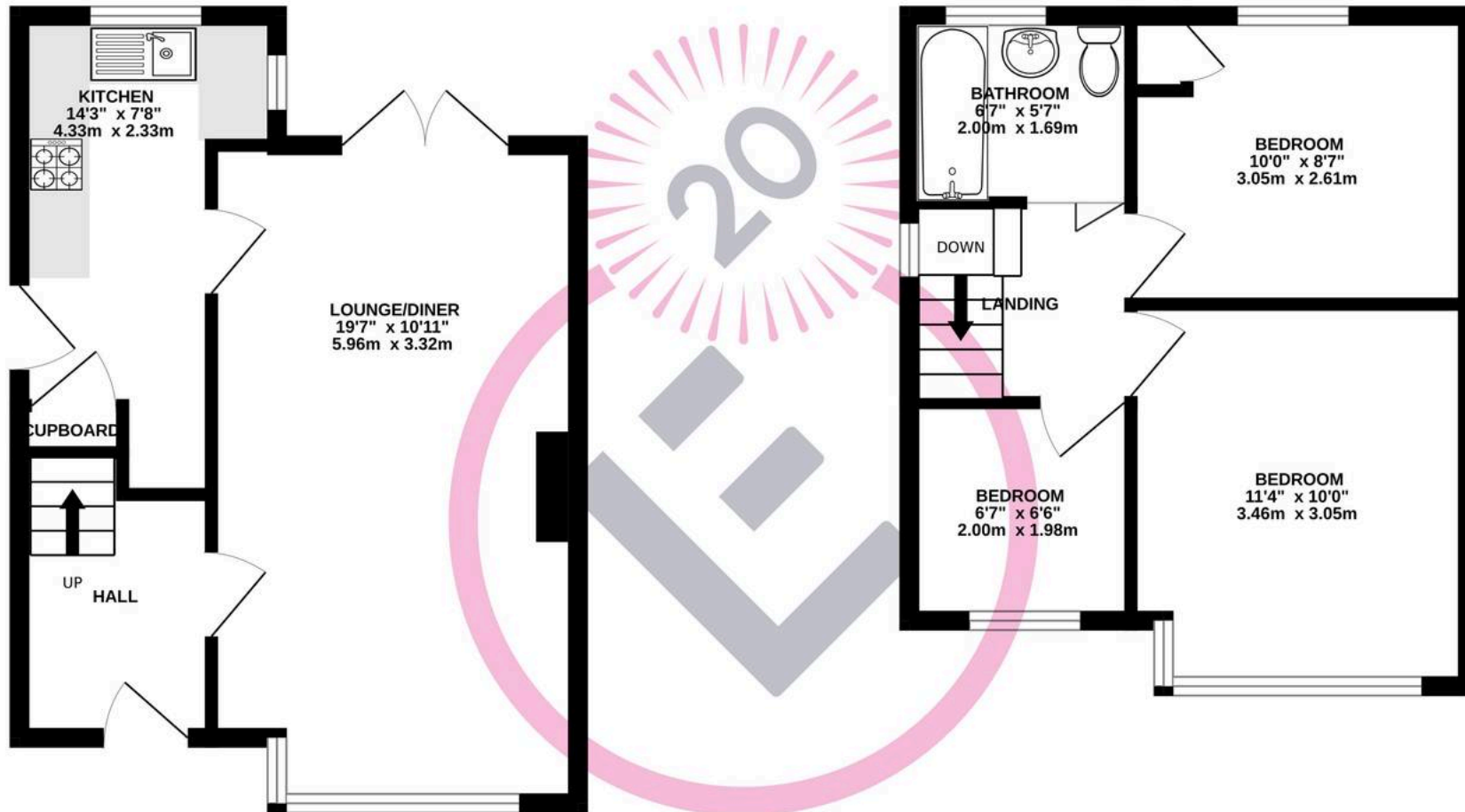
First Floor

On the first floor are three bedrooms and a modern, three piece bathroom with over bath shower.



GROUND FLOOR
336 sq.ft. (31.2 sq.m.) approx.

1ST FLOOR
316 sq.ft. (29.3 sq.m.) approx.



TOTAL FLOOR AREA : 651 sq.ft. (60.5 sq.m.) approx.

Whilst every attempt has been made to ensure the accuracy of the floorplan contained here, measurements of doors, windows, rooms and any other items are approximate and no responsibility is taken for any error, omission or mis-statement. This plan is for illustrative purposes only and should be used as such by any prospective purchaser. The services, systems and appliances shown have not been tested and no guarantee as to their operability or efficiency can be given.
Made with Metropix ©2025



Lancastrian Estates

301/302, Riverway House, Morecambe Road - LA1 2RX

01524 555800 · lancaster@lancastrianestates.co.uk · www.lancastrianestates.co.uk/