



7 Buttermere Road, Lancaster

Lancaster

£165,000









## 7 Buttermere Road

Lancaster, Lancaster

3-bed mid-terraced in South Lancaster, perfect for families. Spacious bedrooms, open plan living, kitchen with French doors to garden. Eco-friendly with air source heat pump and solar panels.

Council Tax band: A

Tenure: Freehold

- Terraced House
- 3 Generous Bedrooms
- Kitchen Diner w/ French Doors to Garden
- Modern Fitted Kitchen & Utility
- Air Source Heat Pump & Solar Panels
- Great Views
- Lawn Garden & Gazebo
- Great Local Amenities & Schools Close By
- Transport & Travel Links
- Residential South Lancaster Location







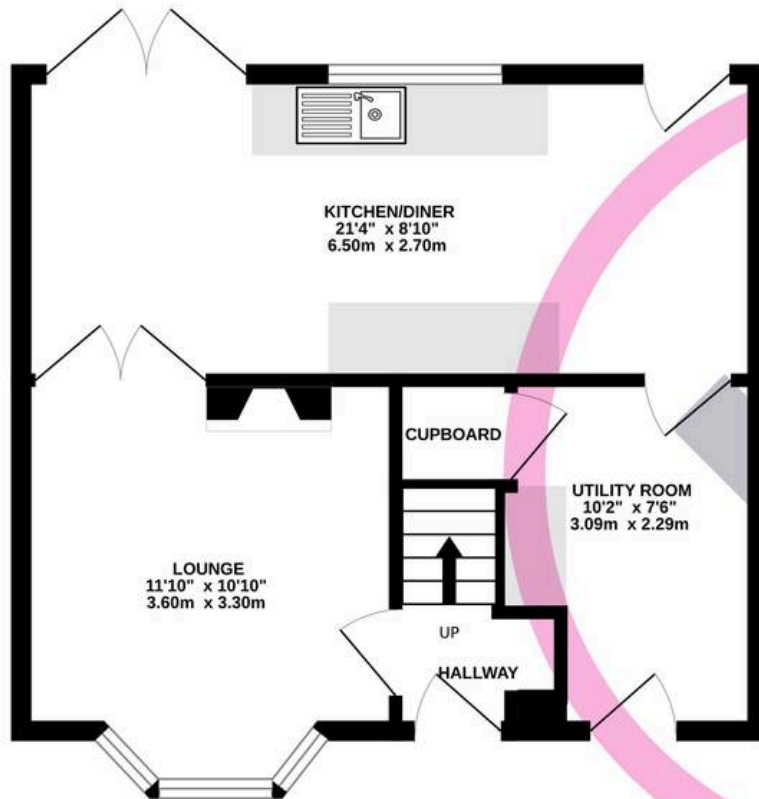


### The House

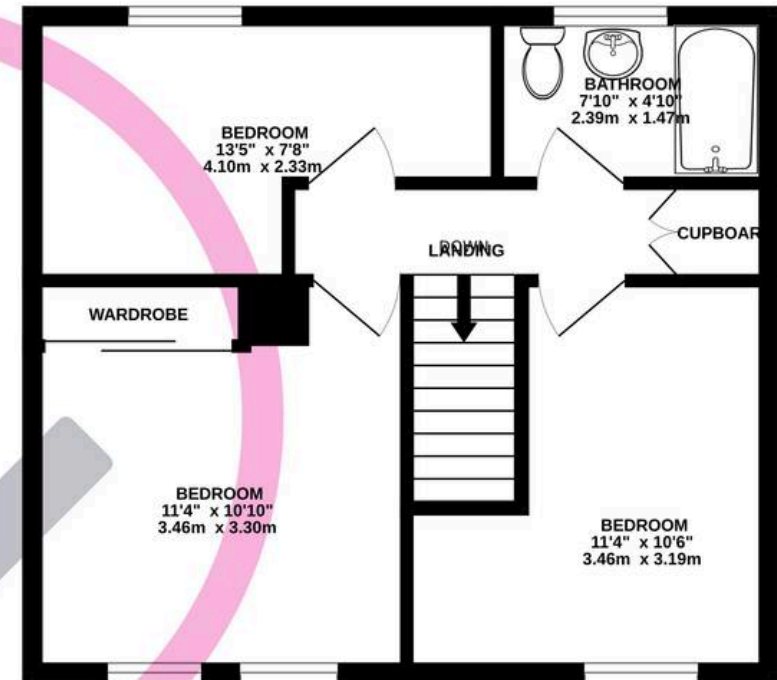
A well presented family home which makes the most of a great position utilising the south facing roof for solar panels. The addition of a new Air Source Heat Pump system makes this house energy efficient. The layout is perfect for families having a central hallway, relaxing bay fronted lounge with focal fire and, at the rear, an open plan kitchen diner with space to relax and French Doors to the garden. The white cabinets of the kitchen keep the space light and airy and there is a separate utility room. Upstairs the great layout continues - three well proportioned bedrooms mean space for the whole family and the family bathroom has a modern white suite with over bath shower. The décor throughout is fresh and modern with grey tones.



GROUND FLOOR  
407 sq.ft. (37.8 sq.m.) approx.



1ST FLOOR  
402 sq.ft. (37.3 sq.m.) approx.



TOTAL FLOOR AREA : 808 sq.ft. (75.1 sq.m.) approx.

Whilst every attempt has been made to ensure the accuracy of the floorplan contained here, measurements of doors, windows, rooms and any other items are approximate and no responsibility is taken for any error, omission or mis-statement. This plan is for illustrative purposes only and should be used as such by any prospective purchaser. The services, systems and appliances shown have not been tested and no guarantee as to their operability or efficiency can be given.  
Made with Metropix ©2025





## Lancastrian Estates

301/302, Riverway House, Morecambe Road - LA1 2RX

01524 555800 · [lancaster@lancastrianestates.co.uk](mailto:lancaster@lancastrianestates.co.uk) · [www.lancastrianestates.co.uk/](http://www.lancastrianestates.co.uk/)