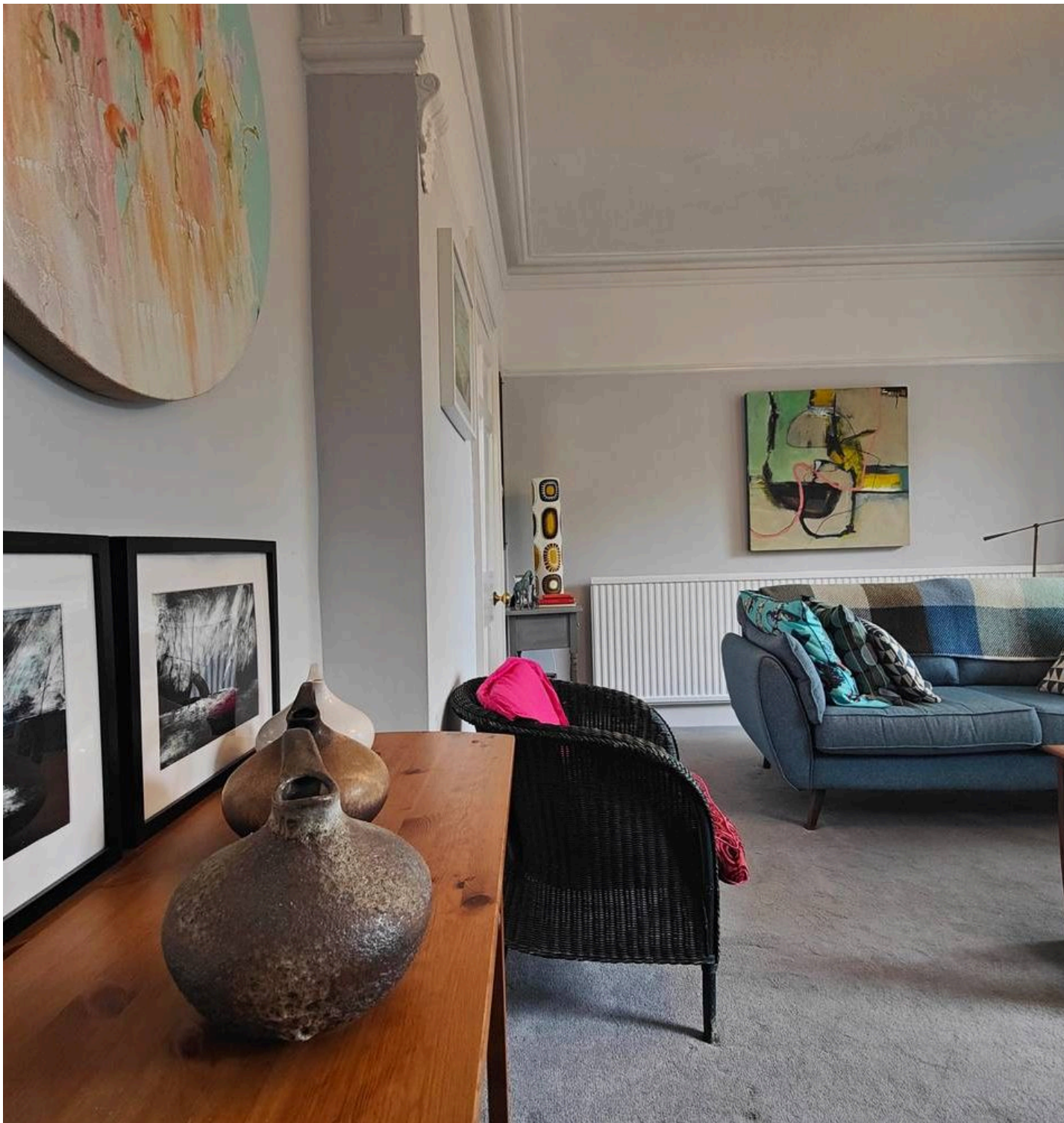




1 Dallas Road, Lancaster
Lancaster

£500,000





1 Dallas Road

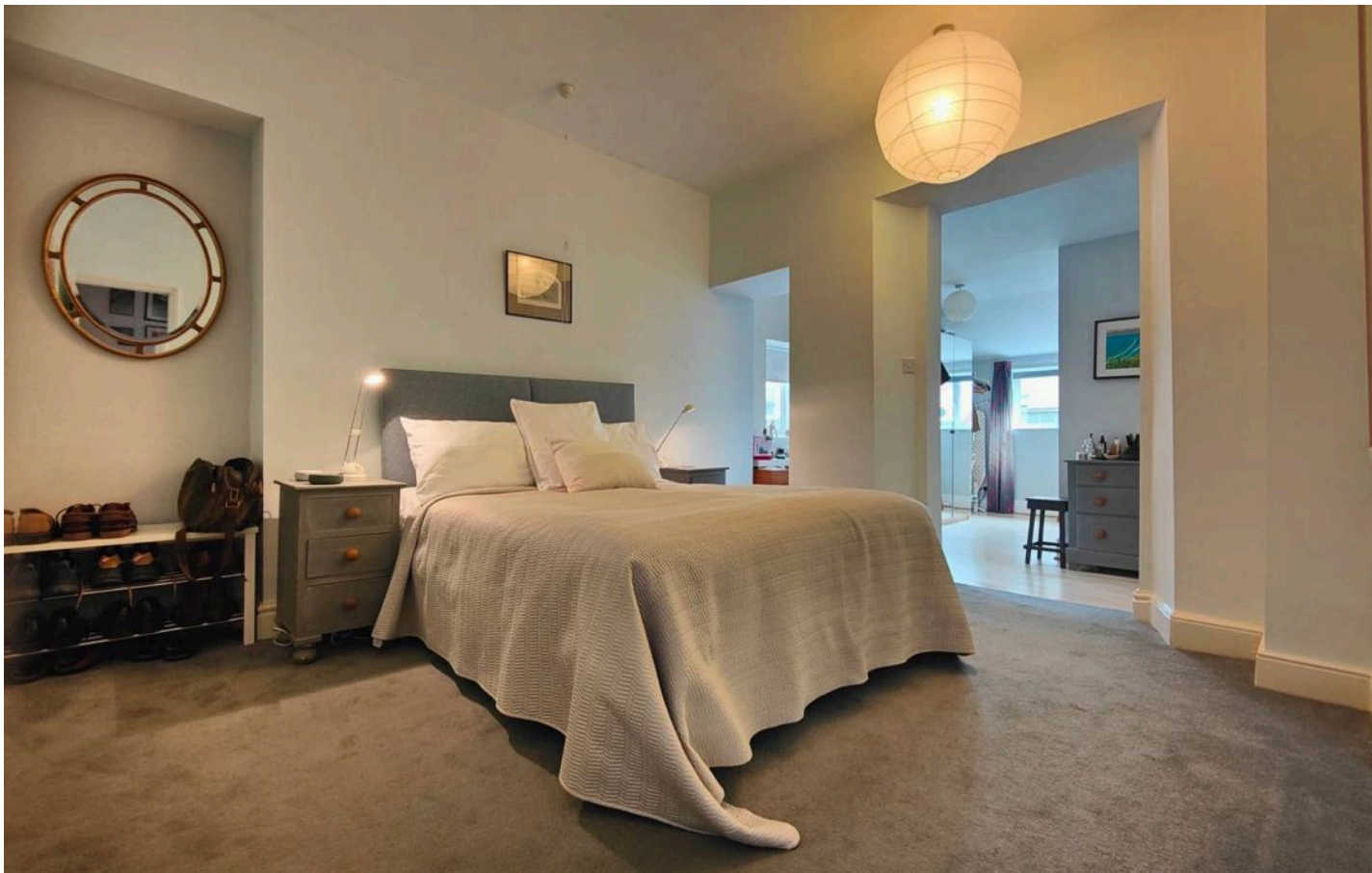
Lancaster, Lancaster

Stunning stone-built character home with 5 bedrooms spanning 3 floors and a cellar. Stylish blend of modern amenities and character features, spacious rooms, serene garden, and views over Lancaster. Council Tax band: C

Tenure: Freehold

- Stone Built Character Home
- 5 Bedrooms, 1 En-Suite
- Open Plan Living
- Sleek Integrated Kitchen
- Character Features
- 3 Floors & Cellar
- Stunning Garden
- Views from Upper Floors
- Transport & Travel Links
- City Centre Amenities



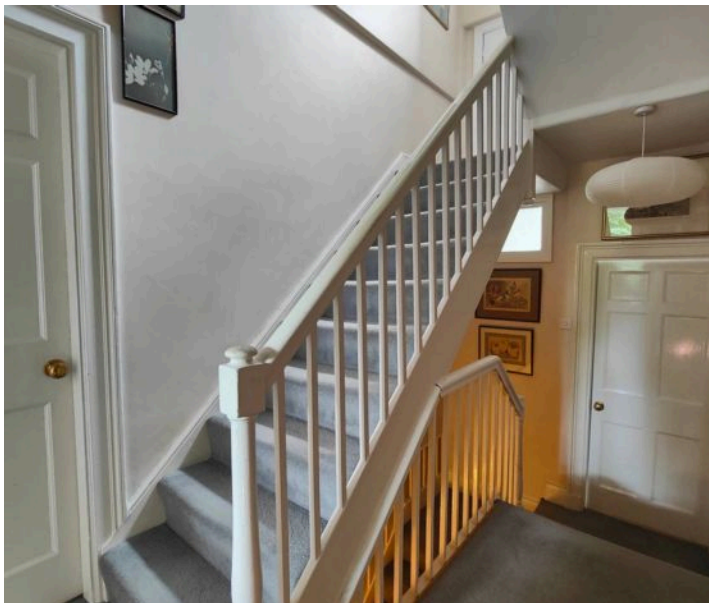


Welcome Home

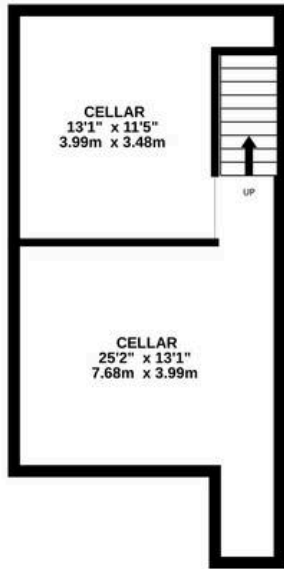
A true home of distinction. Dating back to the late 1840s and situated close to the prestigious Castle precinct this impressive home blends character features with modern living and space. There are three floors and generous cellar accommodation too. Unusually for south Lancaster the property enjoys a real oasis of a garden. The panelled front door opens to a generous vestibule and on to the main hallway. Striking, patterned floor tiles are very much in keeping with the age of the house and complement the decorative corbel stones and cornice. Matching, panelled doors open to the reception rooms and stairs lead to the first floor.

Living Space

Open plan, fresh, light and modern yet retaining character with high ceilings and cornice. The lounge, dining room and kitchen are open plan providing the perfect connected spaces for entertaining and for relaxed family living. There are panelled shutters to the sash style windows and a large, marble fireplace is complemented by a mosaic tiled hearth. A real statement. In the dining room there is an original cupboard to the alcove recess and open access to a modern, fully integrated kitchen. The kitchen was updated in 2021 and has a sleek, high spec finish with integrated appliances. Sliding doors open to the raised, terrace seating area which overlooks the lawn garden surrounded by well stocked beds.



BASEMENT
312 sq.ft. (28.9 sq.m.) approx.



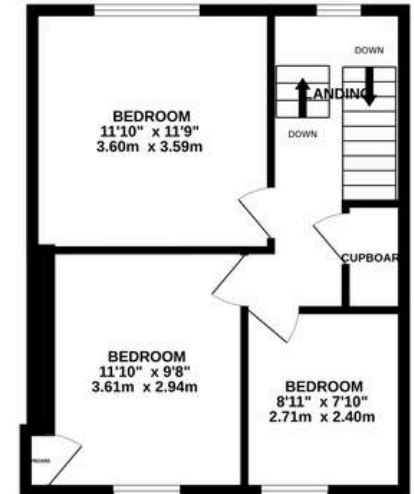
GROUND FLOOR
611 sq.ft. (56.8 sq.m.) approx.



1ST FLOOR
605 sq.ft. (56.2 sq.m.) approx.



2ND FLOOR
428 sq.ft. (39.7 sq.m.) approx.



TOTAL FLOOR AREA : 1956 sq.ft. (181.7 sq.m.) approx.

Whilst every attempt has been made to ensure the accuracy of the floorplan contained here, measurements of doors, windows, rooms and any other items are approximate and no responsibility is taken for any error, omission or mis-statement. This plan is for illustrative purposes only and should be used as such by any prospective purchaser. The services, systems and appliances shown have not been tested and no guarantee as to their operability or efficiency can be given.

Made with Metropix ©2025



Lancastrian Estates

301/302, Riverway House, Morecambe Road - LA1 2RX

01524 555800 · lancaster@lancastrianestates.co.uk · www.lancastrianestates.co.uk/