



16 Lowther Road, Lancaster
£155,000





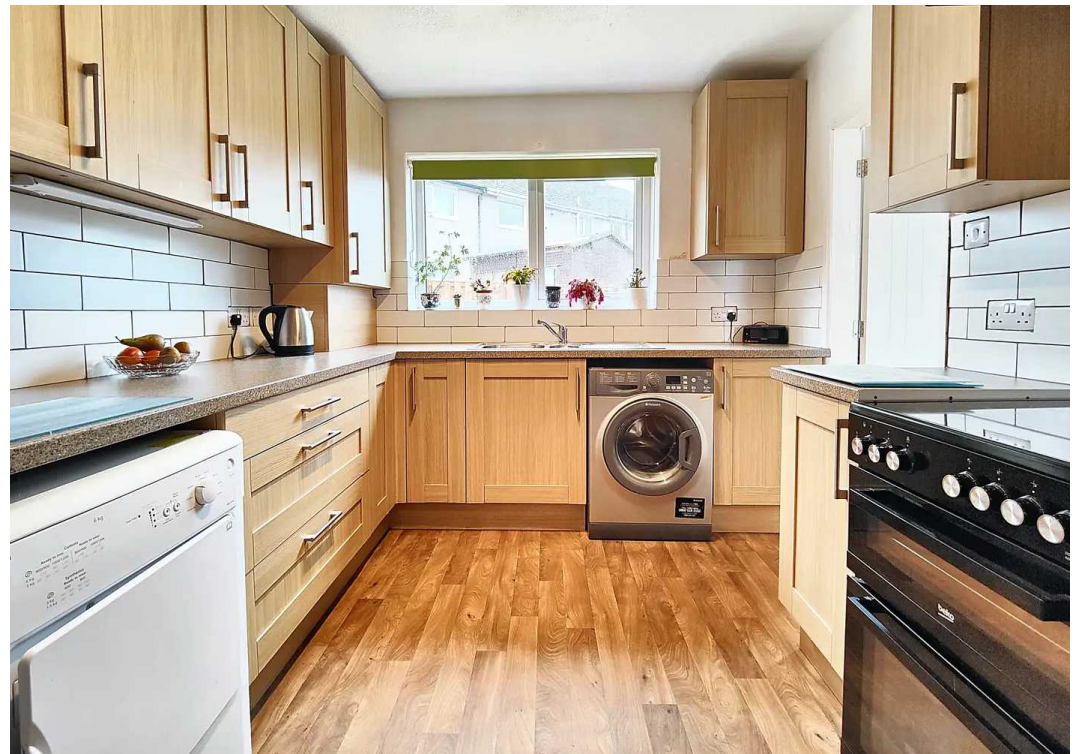
16 Lowther Road

Lancaster, Lancaster

Impeccably presented 2-bed end of terrace house in south Lancaster! Spacious lounge diner, modern kitchen, stylish bathroom. Low maintenance garden, driveway parking. A harmonious blend of modernity and tranquillity, perfect for relaxation and entertaining. Council Tax band: A

Tenure: Freehold

- End Terraced House
- 2 Bedrooms
- Lounge Diner
- Modern Kitchen
- Stylish Bathroom
- Modernised Throughout
- Sun Trap Garden
- Driveway Parking
- Great Local Amenities
- Transport & Travel Links





The House

The smart new red composite door opens to an attractive, light and bright hallway. Modern white décor, grey carpets and a stripped wood wash banister combine to create the perfect contemporary welcome to this modernised home. A window allows natural light to flow in. The open plan lounge diner has a large picture window to the front and French Doors opening to the low maintenance garden at the rear. There is space to dine and space to relax in this open plan reception area. Wood effect laminated flooring and white décor continues the modern feel. The kitchen is finished with light oak effect cabinets and a granite effect work top. The Vaillant combi boiler is housed in the corner cupboard.

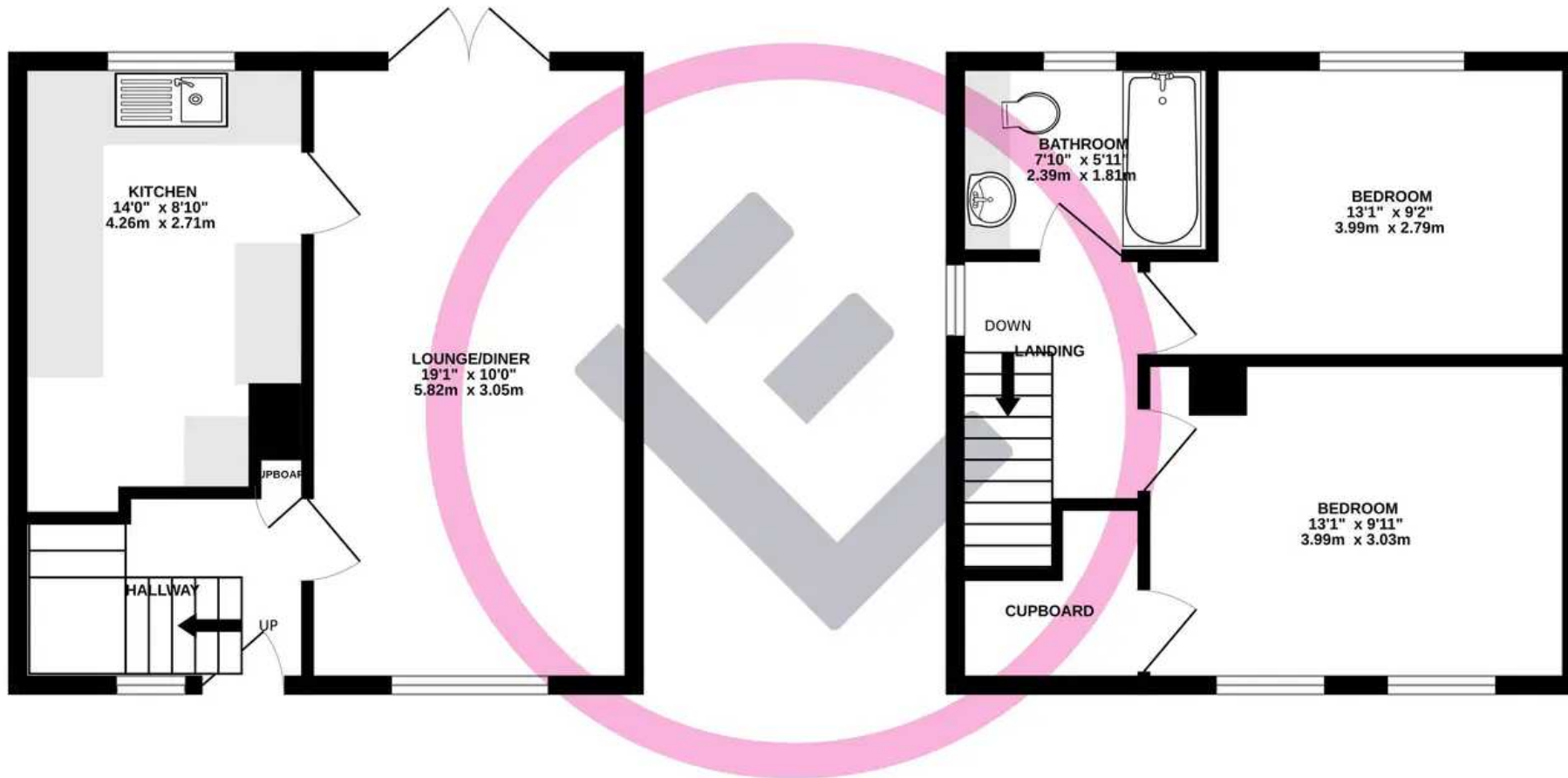
Upstairs

Upstairs the landing also has grey carpets and fresh, white décor. There are two double bedrooms, one to the front and one to the rear. The master bedroom enjoys walk in style closet storage and with two windows the master bedroom is light and bright. Bedroom Two is also a double and looks out over the rear garden which is a sun trap. The bathroom is beautifully updated with bespoke cabinet storage in white. There is a basin and concealed cistern WC. There is an over bath shower and both bath and wash basin have water fall taps.



GROUND FLOOR
357 sq.ft. (33.2 sq.m.) approx.

1ST FLOOR
358 sq.ft. (33.2 sq.m.) approx.



TOTAL FLOOR AREA : 715 sq.ft. (66.4 sq.m.) approx.

Whilst every attempt has been made to ensure the accuracy of the floorplan contained here, measurements of doors, windows, rooms and any other items are approximate and no responsibility is taken for any error, omission or mis-statement. This plan is for illustrative purposes only and should be used as such by any prospective purchaser. The services, systems and appliances shown have not been tested and no guarantee as to their operability or efficiency can be given.

Made with Metropix ©2024

You can include any text here. The text can be modified upon generating your brochure.

