



29 Hazelmount Drive, Warton
£330,000





29 Hazelmount Drive

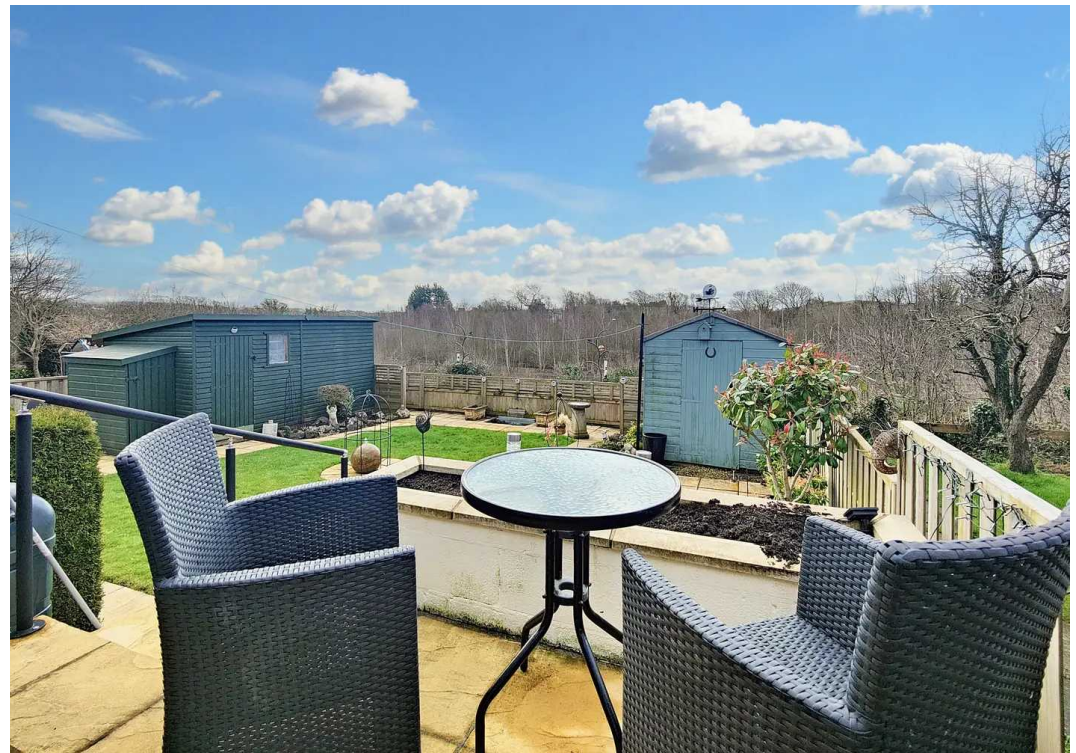
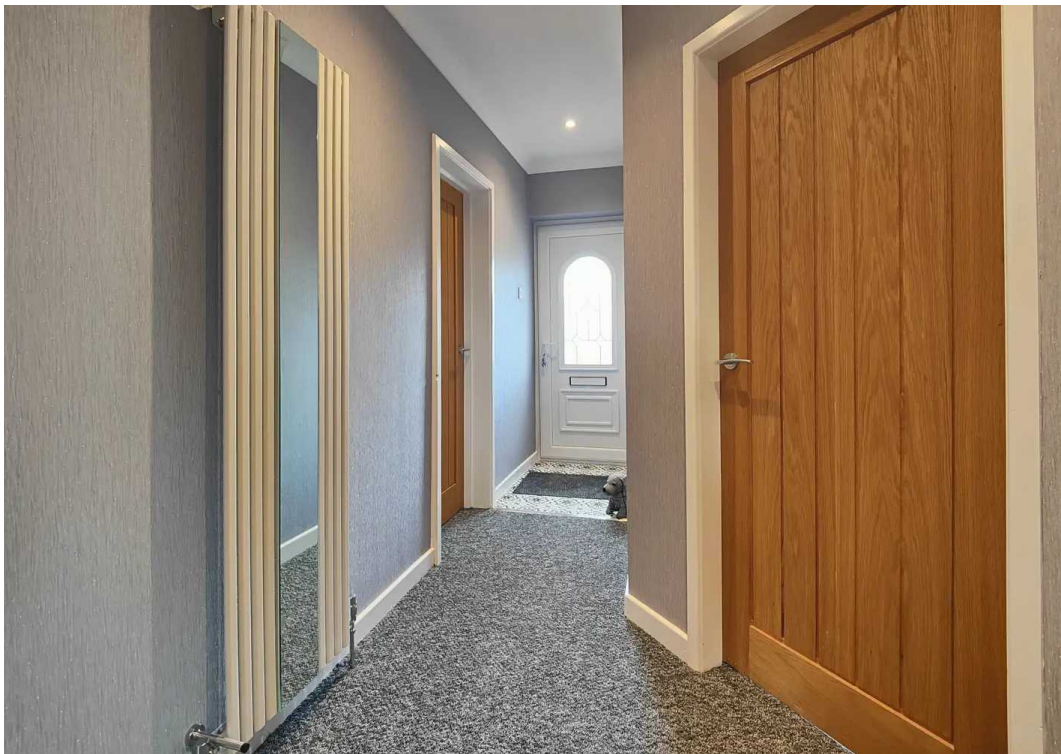
Warton, Carnforth

Step inside and be impressed by light, modern living at this impressive 4-bed detached house! Light-filled living spaces incl. orangery, conservatory, family room. Landscaped rear garden & ample parking. Flagged patios for outdoor dining and relaxation. Ideal for modern family living!

Council Tax band: D

Tenure: Freehold

- Detached House
- 4 Bedrooms
- Light, Airy Living Spaces
- Orangery & Conservatory
- Family Room & Utility
- Shower Room & Wet Room
- Plenty of Parking
- Landscaped Rear Garden
- Sought After Residential Area
- Transport & Travel Links





Welcome Home

What a stunning double fronted property this is! The current owners have refurbished and updated it to create the perfect, modern family home. Step through the front door and you are greeted by a bright, modern hallway. Grey carpets are complemented by the décor and matching, oak panelled doors create a seamless feel. Doors open on either side to the ground floor rooms.

Living Space

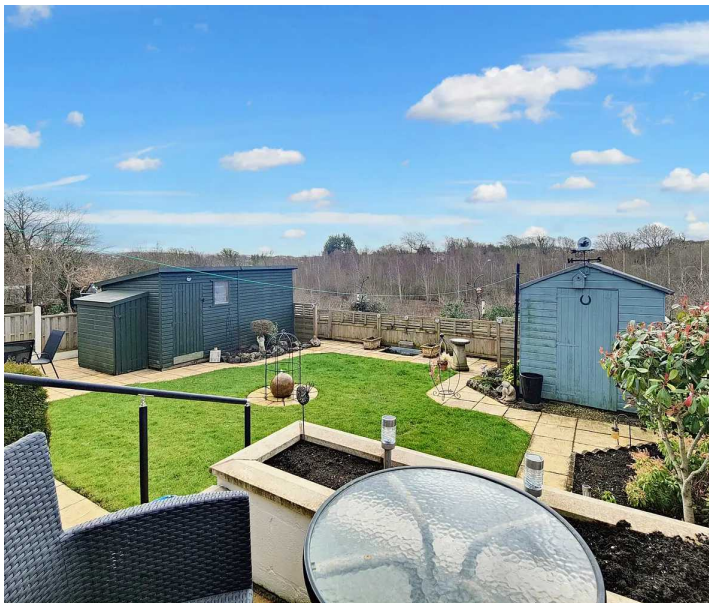
The main lounge is situated centrally at the rear making it the real heart of the home. The inclusion of Velux windows to the lounge and French Doors opening to the Orangery create impressive light, bright living. The open stair leading to the first floor has a chrome balustrade accentuating the sleek, modern feel. White décor and a contemporary white feature fire complete the look. The Orangery offers the perfect space to dine, entertain and relax and the elevated position overlooking the garden and trees to the rear add the feel of light balanced with privacy.

Modern Kitchen

Sleek light wood effect cabinets, concealed handles, integrated appliances and a solid white sparkle work top with complementing gloss sparkle finish porcelain style floor tiling make this the perfect style choice. To the side of the house, off the sitting room you will find a very functional utility room which opens to a separate rear conservatory. Being situated off the sitting room this space offers the perfect opportunity for the family to spread out and enjoy private space. Perfect for intergenerational families and allowing teenagers increasing independence as they grow.

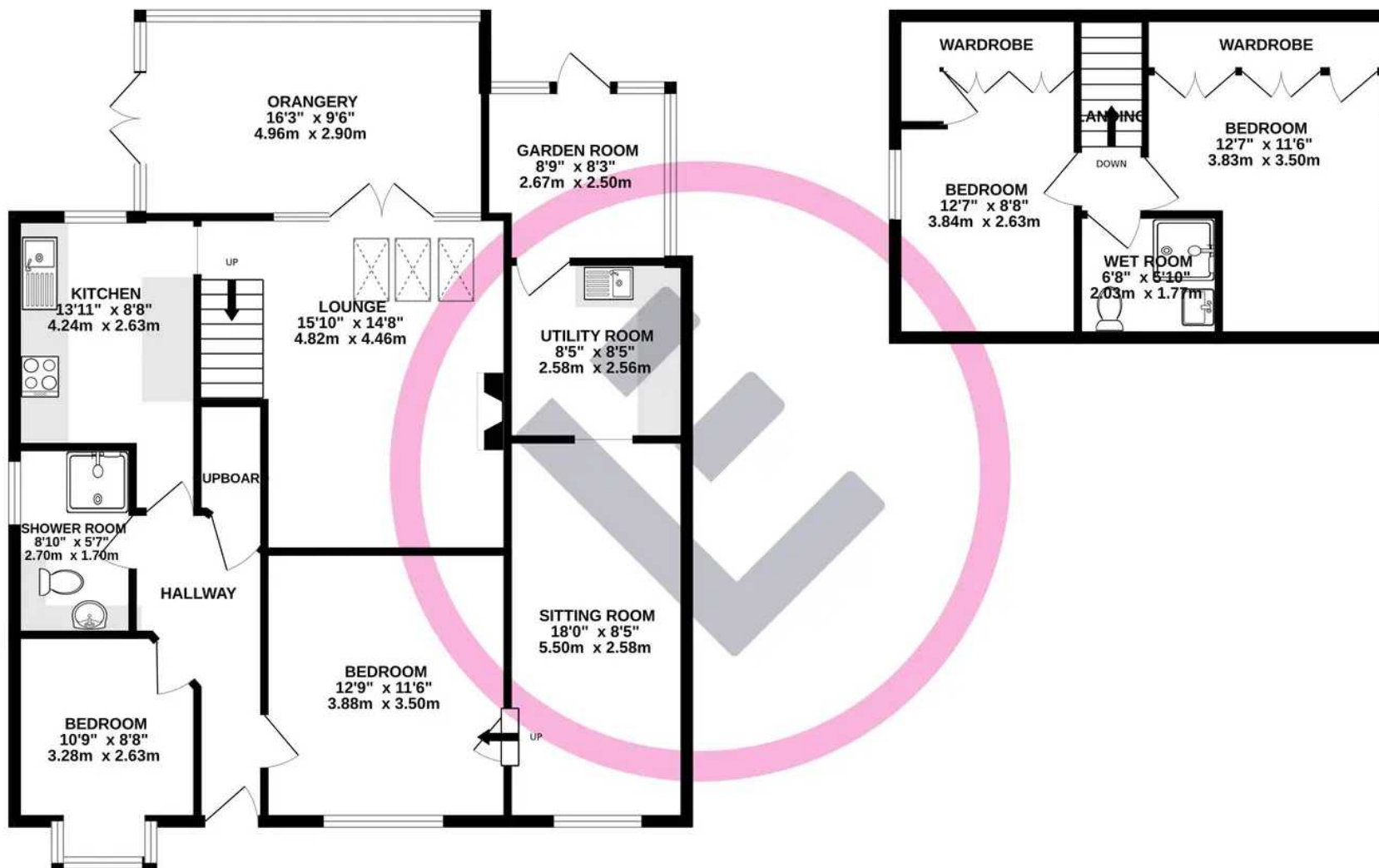
Bedrooms & Bathrooms

Upstairs you will find two generous bedrooms. The upstairs wet room is modern, beautifully finished with slate effect tiling, ambient lighting and underfloor heating. Downstairs are two bedrooms.



GROUND FLOOR
1116 sq.ft. (103.7 sq.m.) approx.

1ST FLOOR
354 sq.ft. (32.9 sq.m.) approx.



TOTAL FLOOR AREA : 1470 sq.ft. (136.6 sq.m.) approx.

Whilst every attempt has been made to ensure the accuracy of the floorplan contained here, measurements of doors, windows, rooms and any other items are approximate and no responsibility is taken for any error, omission or mis-statement. This plan is for illustrative purposes only and should be used as such by any prospective purchaser. The services, systems and appliances shown have not been tested and no guarantee as to their operability or efficiency can be given.
Made with Metropix ©2024

You can include any text here. The text can be modified upon generating your brochure.

