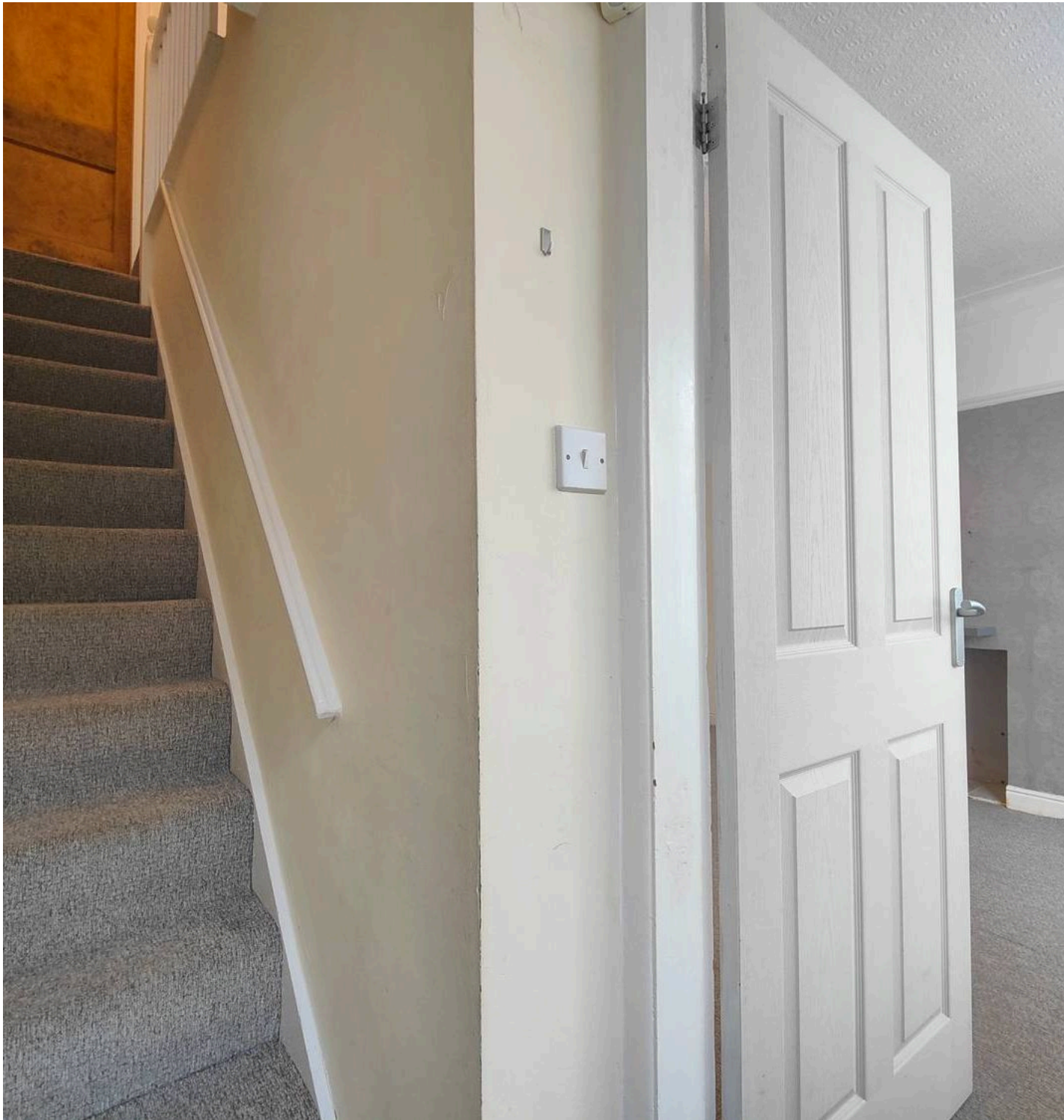




67 Wingate Saul Road, Lancaster
Lancaster

£185,000





67 Wingate Saul Road

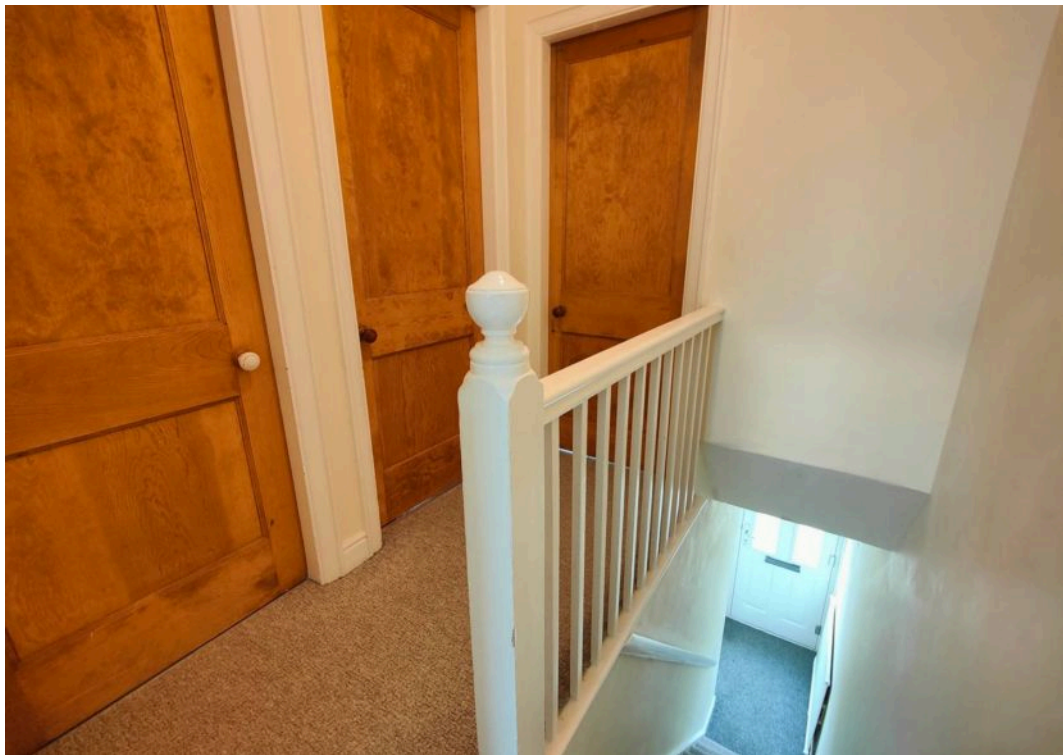
Lancaster, Lancaster

Exquisite 3-bed terrace in South Lancaster. Chain-free, Act Fast! Charming kitchen diner, sophisticated living area, elegant bedrooms. Resident parking, excellent transport links.

Council Tax band: A

Tenure: Freehold

- Terraced House
- 3 Bedrooms
- No Chain
- Kitchen Diner
- Garden
- Resident Parking Zone
- Sought After Fairfield Area
- Transport & Travel Links
- City & Station a Walk Away
- Great Local Amenities





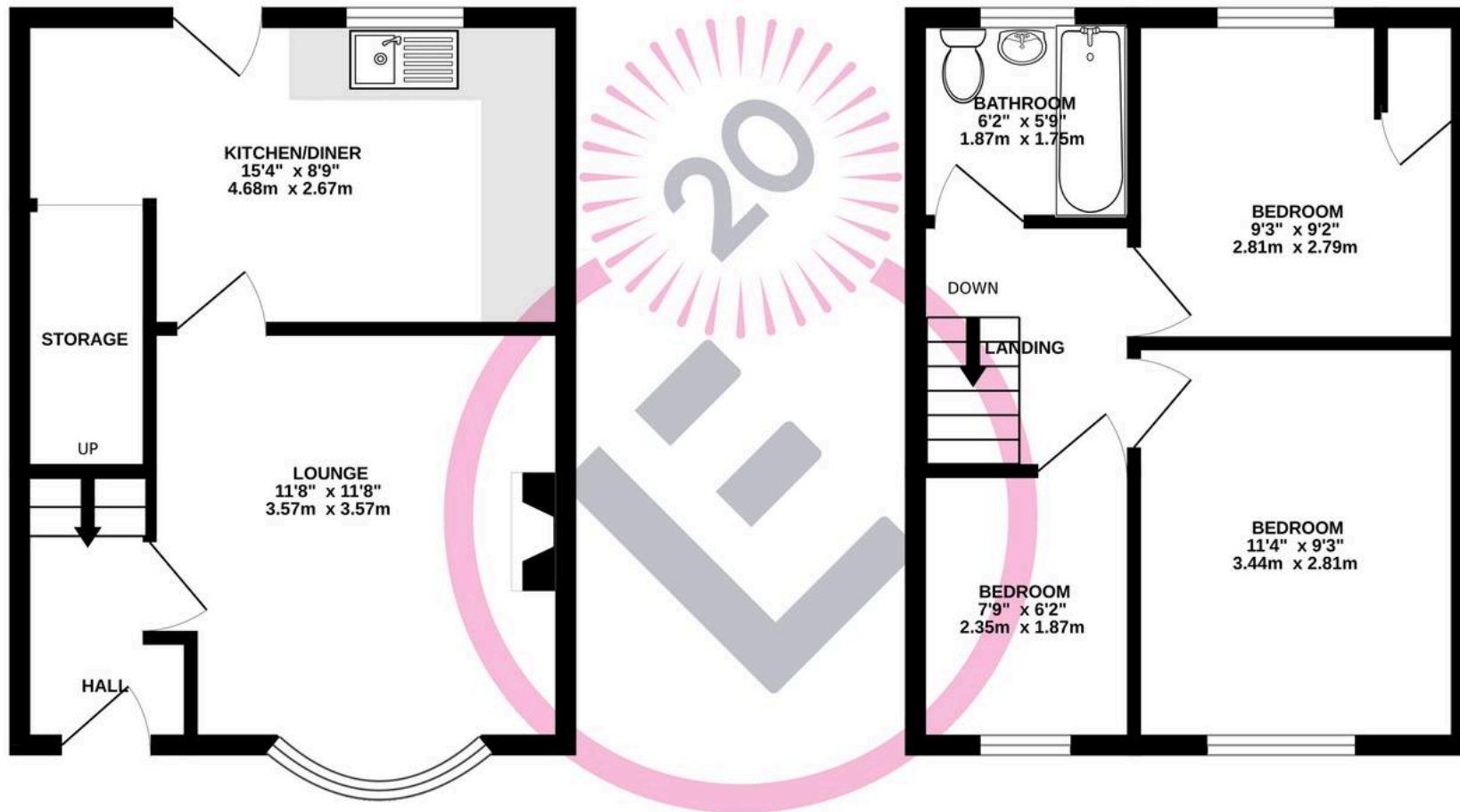
Welcome Home

This family house has a traditional, bow fronted frontage and is set back from the street with a gated front garden. The double glazed front door opens to a hallway where stairs lead up and a panelled door to the side opens to a modern, bow fronted lounge. The perfect space to relax and unwind. From the lounge a matching panelled door opens to a modern kitchen diner at the rear where you can enjoy family time or entertain. The back door opens to a generous rear garden which is such a bonus for a south Lancaster house. Upstairs there are three bedrooms and a modern, three piece bathroom.



GROUND FLOOR
315 sq.ft. (29.3 sq.m.) approx.

1ST FLOOR
314 sq.ft. (29.2 sq.m.) approx.



TOTAL FLOOR AREA : 630 sq.ft. (58.5 sq.m.) approx.

Whilst every attempt has been made to ensure the accuracy of the floorplan contained here, measurements of doors, windows, rooms and any other items are approximate and no responsibility is taken for any error, omission or mis-statement. This plan is for illustrative purposes only and should be used as such by any prospective purchaser. The services, systems and appliances shown have not been tested and no guarantee as to their operability or efficiency can be given.
Made with Metropix ©2025



Lancastrian Estates

301/302, Riverway House, Morecambe Road - LA1 2RX

01524 555800 · lancaster@lancastrianestates.co.uk · www.lancastrianestates.co.uk/